



RENEWABLE ENERGY ZONE FACTSHEET

About Queensland Renewable Energy Zones

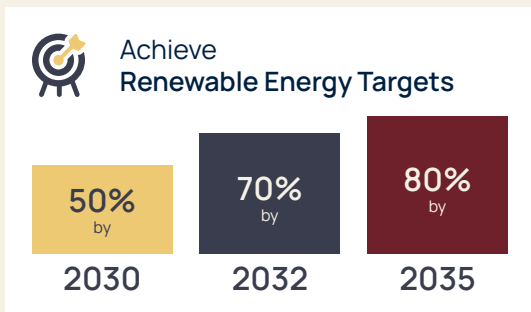
Who is Powerlink?

Powerlink is a Government Owned Corporation that owns, develops, operates and maintains the transmission network in Queensland.

We connect Queenslanders to a world-class energy future, providing electricity to more than five million Queenslanders and 253,000 businesses. We are also responsible for connecting large-scale renewable energy developments, including wind and solar, and providing electricity to large industrial customers in the rail, mining and LNG sectors.

This factsheet outlines what a Renewable Energy Zone (REZ) is, why and how a REZ is declared, considerations in declaring a REZ and an introduction to the benefits of REZs.

For more information on who is involved in a REZ, what is different about REZs in Queensland, and the benefits of REZs for Queenslanders, local communities, landholders and renewable energy companies, please see the resources tab on Powerlink's Renewable Energy Zones webpage: powerlink.com.au/qrez.



What is a Renewable Energy Zone?

A Renewable Energy Zone (REZ) is a geographic area which has a high amount of renewable energy resources, like sun and/or wind, and is in a location that has hosting capacity in the nearby transmission network.

These factors, combined with others, make the area an optimal location for renewable energy generation and connection into Powerlink's transmission network.

What is hosting capacity?

Hosting capacity refers to available energy capacity in the transmission network which will allow connection of a new renewable energy generator without the need for a network upgrade.

For more information on how a REZ works, please see our website by scanning the QR code.



Principles of Queensland REZs



Put customers first



Apply low cost, scale-efficient infrastructure



Engage communities



Best use of renewable resources

Powerlink acknowledges the Traditional Owners and their custodianship of the lands and waters of Queensland and in particular, the lands on which we operate. We pay our respect to their Ancestors, Elders and knowledge holders and recognise their deep history and ongoing connection to Country.

Freecall 1800 635 369
powerlink.com.au/qrez



SAFE FOR LIFE
Everyone. Everywhere. Everyday.

Why is a REZ declared?

To understand why a REZ might be declared by the Queensland Government, we first need to understand how renewable energy companies connect to our transmission infrastructure. Without the REZ framework, requests to connect renewable energy projects to the Powerlink transmission network were implemented on a case-by-case basis. By declaring an area a REZ, the conditions of developing and connecting a renewable energy project inside a REZ will result in more efficient, optimised placement of infrastructure, as well as coordinated community and landholder benefits.

Specific features of a Queensland REZ

While the REZ framework and the intended benefits will be consistent across Queensland, the specific design and approach for each REZ declared by the Queensland Government will be unique. For example, each declared REZ will reflect the differences in location, geography, renewable resources and community context.

What is considered before the Queensland Government declares a REZ?

Powerlink is taking a market-led approach and will work with renewable energy companies to identify projects of the right size to allow delivery of scale-efficient and cost-effective transmission infrastructure.

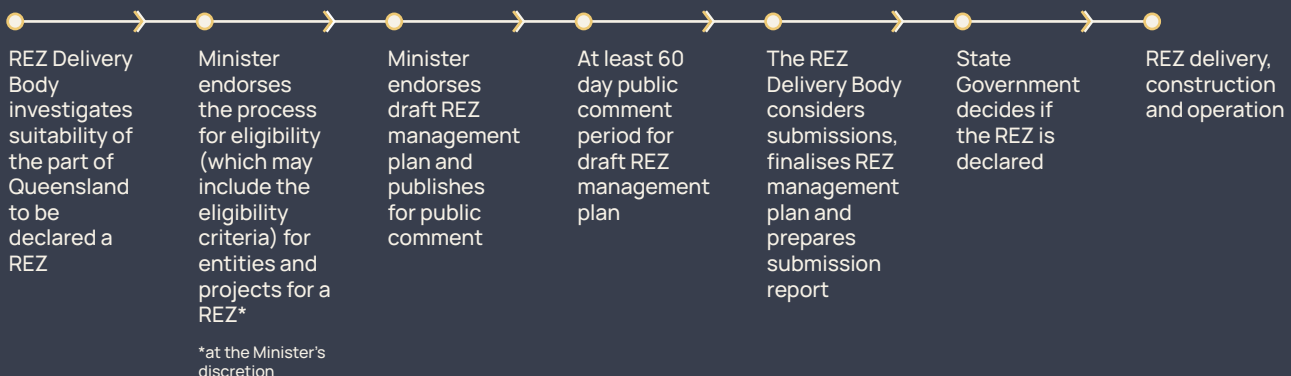
Powerlink will also work with the Queensland Government to understand the suitability of an area for the development and operation of transmission and renewable energy projects.

We're proud of the strong links we've developed within our communities. Community engagement will be undertaken as part of declaring each REZ to ensure we can be informed by and respond to community views and insights (read more on the last page of this factsheet).

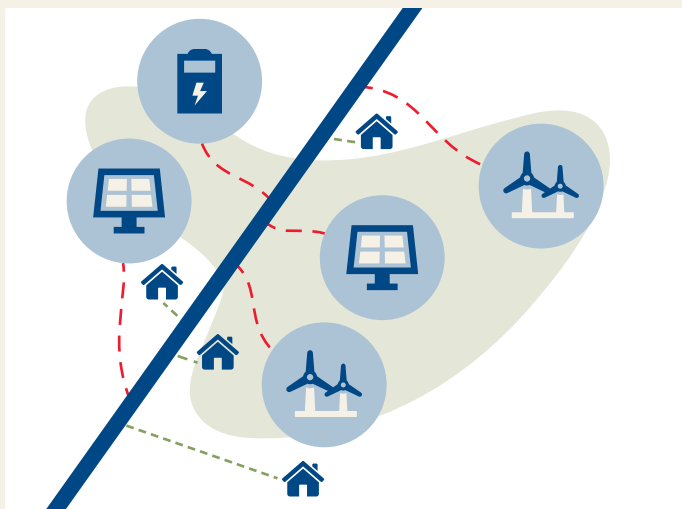
What is involved in declaring a REZ?

The *Energy (Renewable Transformation and Jobs) Act 2024* (Energy Act) sets out the framework for declaring a REZ in Queensland. Before the Queensland Government declares a REZ, the REZ Delivery Body needs to identify that the area to be declared a REZ is suitable for renewable energy and that the impact on Queensland communities is appropriately considered.

Declaring a REZ happens across several key steps, with each of these stages involving communication and engagement between renewable energy companies, local communities, and state and local governments.

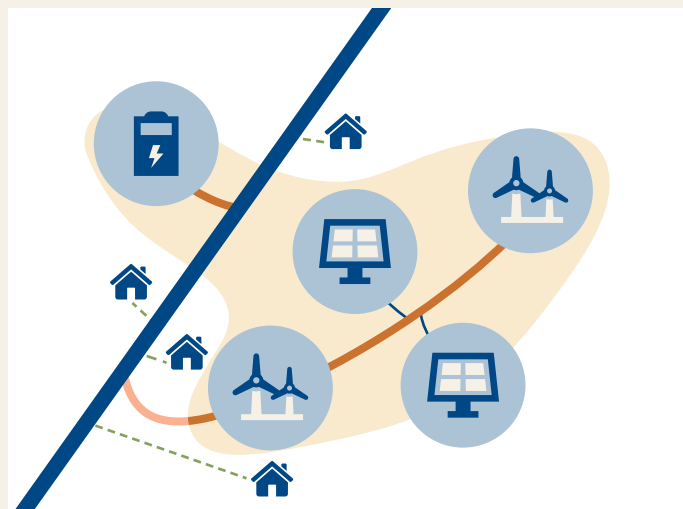


Non-REZ development



New projects connecting to the existing network on a case-by-case basis can lead to a less coordinated approach. There may also be more infrastructure constructed to connect the projects to the grid.

REZ development



Declaring a REZ can result in greater coordination, allowing for upfront planning and network investments in an area where there is a high degree of market-led interest. This can lower the total system cost in the long-term, coordinate community benefits, provide greater access to the best renewable resources, and improve overall system outcomes.

Legend

- Resource-rich area
- Renewable Energy Zone (REZ)
- Powerlink transmission infrastructure (the transmission highway)
- Powerlink generator connections
- Energy Queensland electricity distribution infrastructure (connections to houses and small industry)
- REZ transmission network
- ☀️ Renewable energy projects (solar, wind and battery)
- 🏠 Homes and small industry

What are the benefits of a REZ?

Each REZ will be unique and subject to its own planning and investigation of detailed benefits for the local community, landholders, renewable energy companies, and all Queenslanders. These benefits will be tailored to each REZ area and will be guided by this set of values.

For more information on how a REZ works, please see our website by scanning the QR code.



✓ Sustainable energy	✓ Efficient infrastructure	✓ Long-term certainty
✓ Scale efficiency	✓ Clarity and certainty	✓ Energy security
✓ Genuine and ongoing engagement	✓ Cumulative benefits	
✓ Shared community investment	✓ Streamlined connection approvals	

What is a REZ management plan?

Each declared REZ will be supported by a REZ management plan (RMP). The RMP is a document that outlines how a REZ will be developed, operated and managed.

The RMP is a technical document, with the Energy Act and associated regulations specifying what must be included in the RMP.

Key elements of a RMP include:

- » REZ transmission infrastructure
- » Geographic boundary of the REZ
- » Generation capacity of the REZ
- » Renewable energy sources
- » Access principles
- » Dispute resolution process

The RMP will be accompanied by a companion document, **Getting involved in the REZ**, that will outline what is included in the RMP and why this is in the plan. It will also explain aspects of the REZ declaration and RMP that are particularly relevant to local communities and renewable energy companies.

Further information

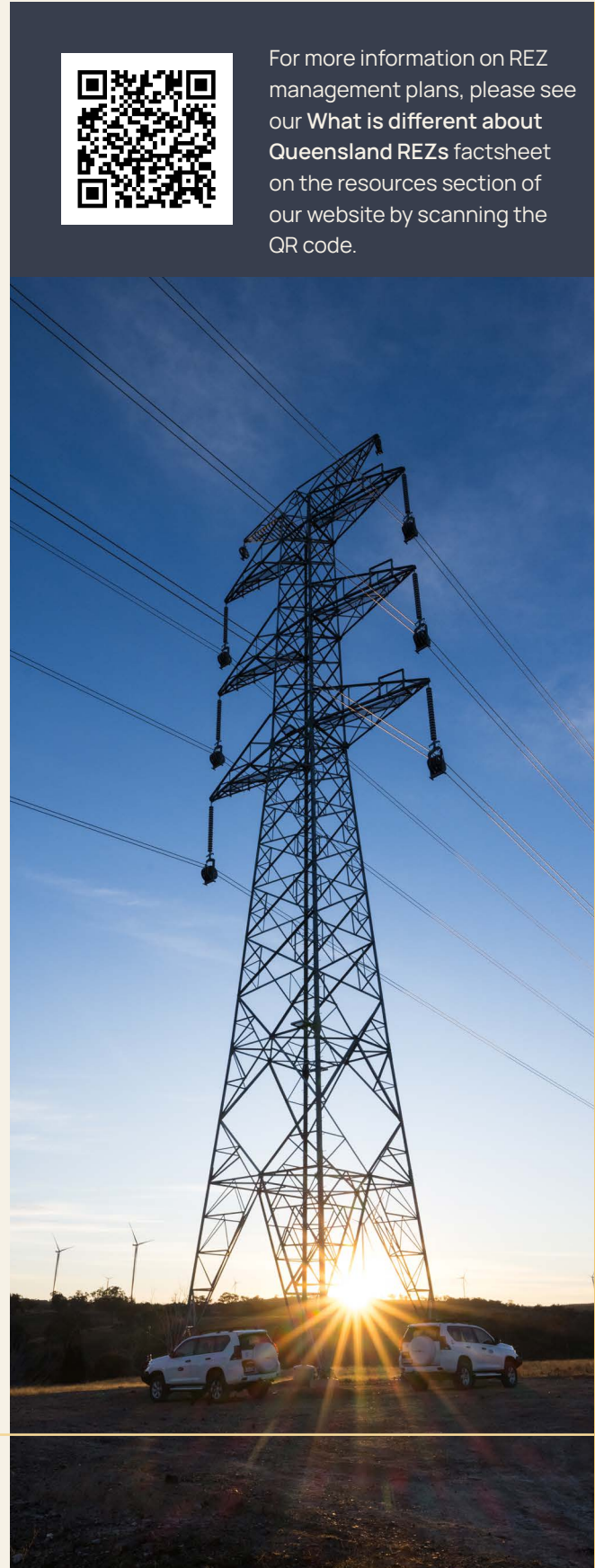
REZs will be legislated under the *Energy (Renewable Transformation and Jobs) Act 2024*



The Queensland Renewable Energy Zone Roadmap



Powerlink's Renewable Energy Zone webpage



For more information on REZ management plans, please see our **What is different about Queensland REZs** factsheet on the resources section of our website by scanning the QR code.