

Gladstone SuperGrid Training Centre and Transmission Hub Supplier Briefing Presentation

Monday 3 June 2024



Acknowledgement

Powerlink acknowledges the Traditional Owners and their custodianship of the lands and waters of Queensland and in particular, the lands on which we operate.

Today we acknowledge the Bailai, Gurang, Gooreng Gooreng, Taribelang Bunda peoples on whose lands we meet this morning.

We pay our respect to their ancestors, Elders and knowledge holders and recognise their long history and deep ongoing connection to Country.

Agenda

During the presentation, we kindly request that all questions be held until the end.

As this session is being conducted in a hybrid format, we encourage participants to use the chat function for any questions.

1. About Powerlink Queensland
2. Proposed Gladstone SuperGrid Training Centre & Transmission Hub
3. Why is local procurement important to Powerlink
4. Powerlink Procurement
5. Project Timing
6. Early Works, work packages
7. Main Works, work packages
8. Expression of Interest process
9. Questions

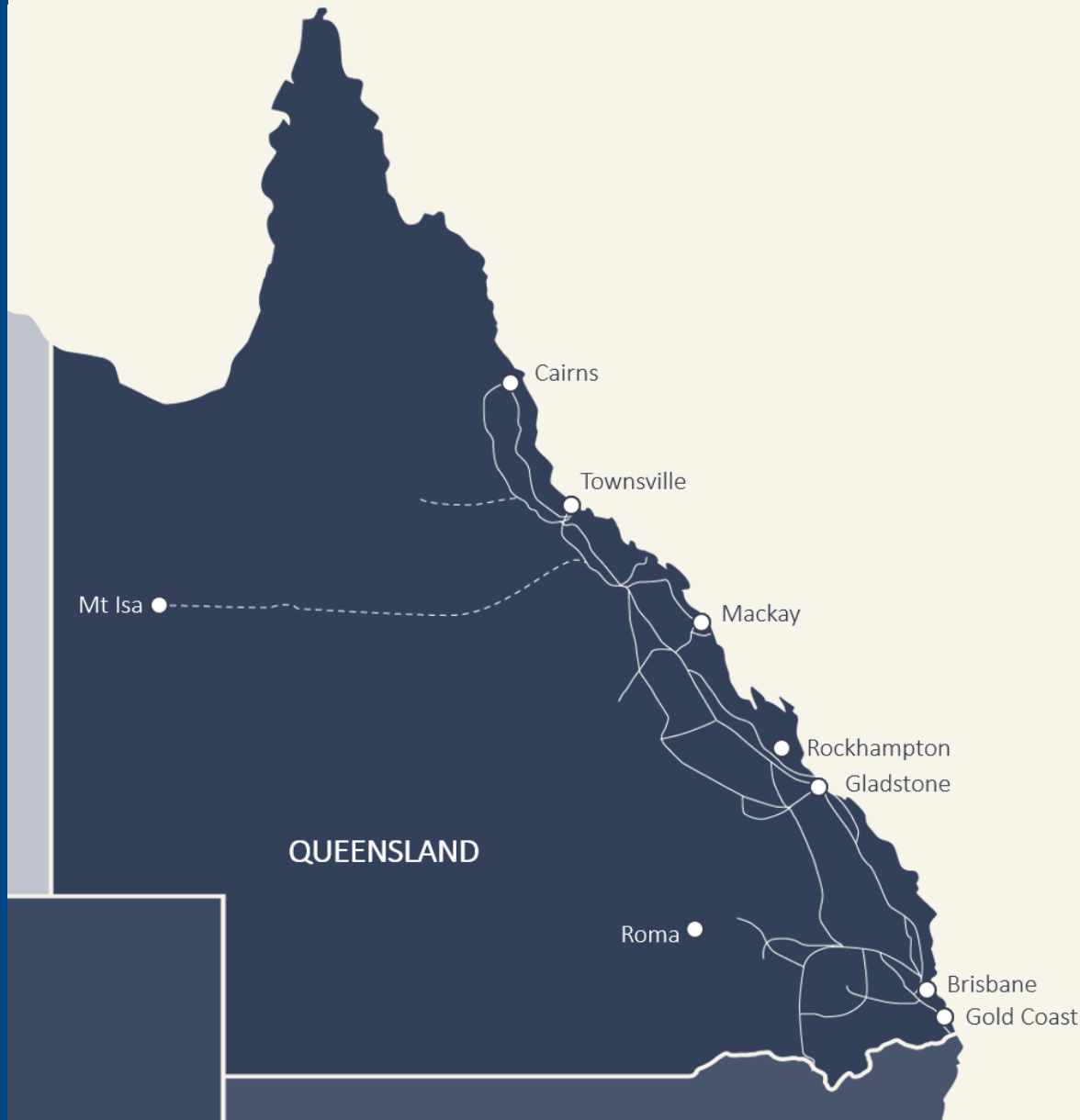
About Powerlink Queensland



Our new
energy future

[View
Video](#)

Powerlink Queensland



Queensland Government owned – one of Australia’s leading transmission network companies.

We own, develop, operate and maintain the **high voltage transmission** network.

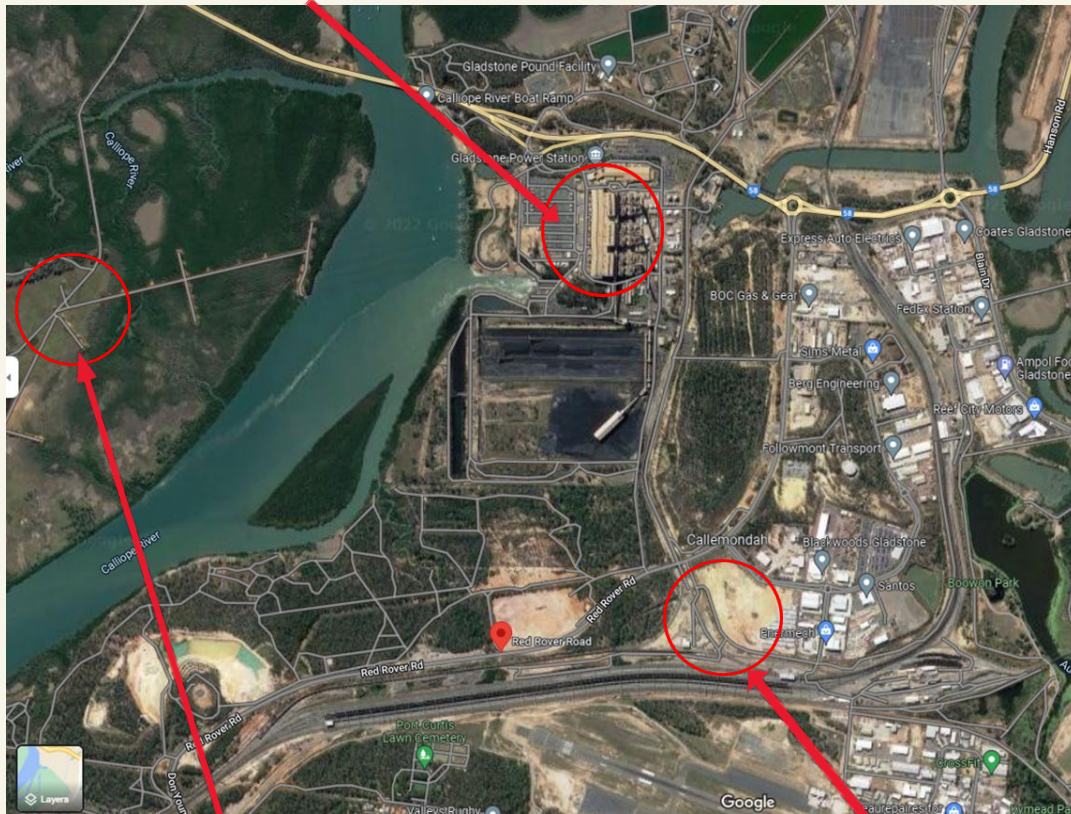
We provide electricity to more than **five million Queenslanders** and **253,000 businesses**.

Our network runs **1,700km** from north of Cairns to the New South Wales border.

Comprises **15,358** circuit kilometres of transmission lines and **147** substations.

Location

Gladstone Power Station



H067 Calliope River Substation

Proposed site long term hub site

Site - Lot 13 Clinton Industrial Estate, 47 Bensted Road, Gladstone QLD

Why Gladstone – Gladstone is key to the pipeline of work, Powerlink has planned over the next decade.

This site will establish a permanent regional presence in Central Queensland and provide our people a world-class transmission training environment and workplace.

Project Status: QLD Government announced the funding, Design currently underway, Authorities consultation ongoing, Procurement strategy being finalised.

Proposed Gladstone Hub

A **world-class learning facility** that includes

- Simulated High Voltage (HV) Training Bay with control room
- 3 x Training rooms with supporting break-out spaces.
- Apprenticeship workspaces
- Outdoor and indoor towers

Customer—and stakeholder-facing areas that include

- Reception with a meeting rooms

A **contemporary workplace** that includes

- 51 fixed work points, 36 flexible work points (quiet areas, meeting rooms) and an innovation/collaboration zone.
- Common lunch and wellness spaces with End-Of-Trip (EOT) facilities (gender-inclusive), rooms for parents, multi-faith and first aid.
- 131 car parks

Operational spaces that include

- Field-based staging, investigation, test benches, and tools workshop
- An operational warehouse space is 1600 sqm, with an additional 200 sqm of mezzanine-level storage.
- Vehicle washdown and weighbridge
- Hardstand storage zones will total 1,465 sqm across the site
- Areas to support **future growth** are 16000 sqm south of the site.



South-facing view

Proposed Gladstone Hub



View of the simulated High Voltage (HV) Training Bay



North-facing view

Site Context



Site Characteristics

Land area: 61,090m²
Zoning: Medium impact industry
Local Authority: Gladstone Regional Council

Constraints: Embankment, easement and site access

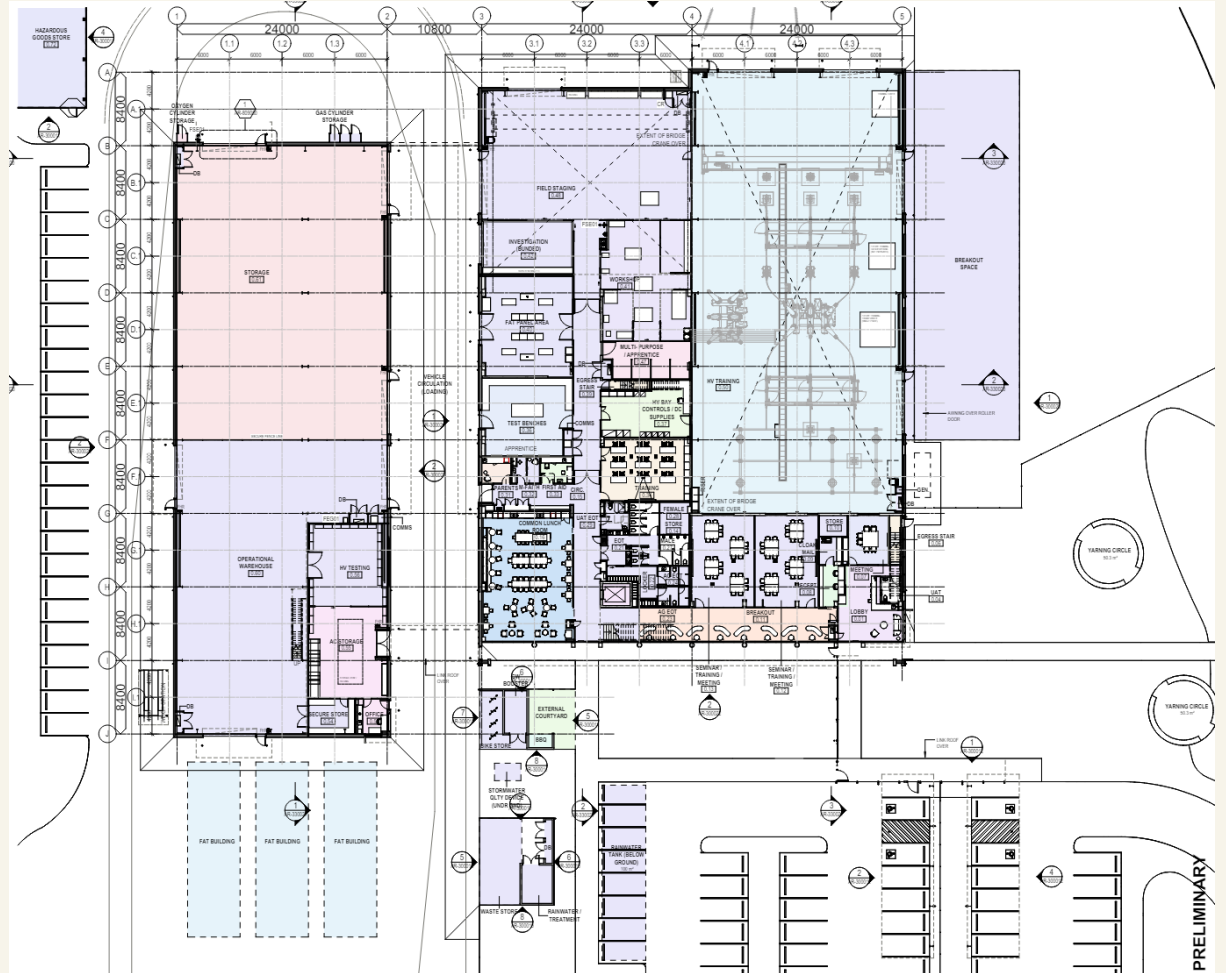
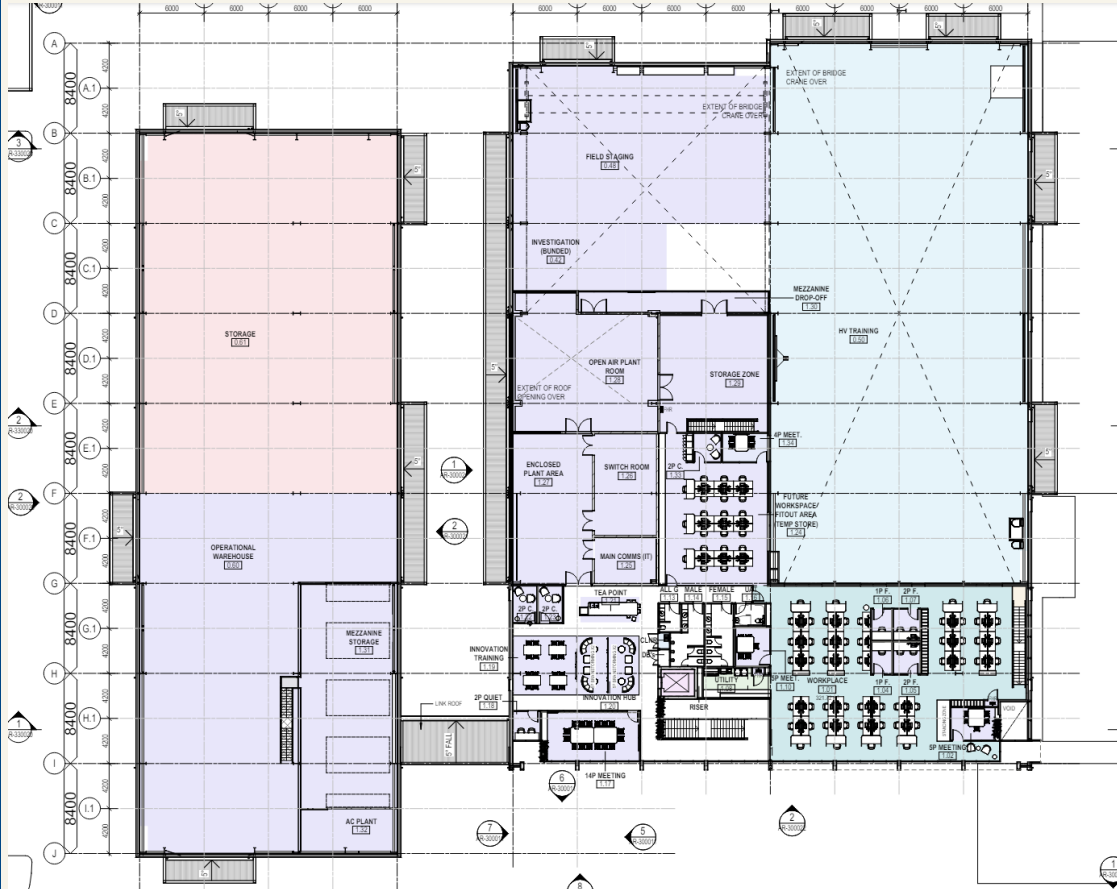
Design considerations: Noise from the roads, rail corridors, airport, and site characteristics, e.g. sun and wind impacts.

Grass Embankment

Easement 15m

Proposed Gladstone Hub

Floor Plans:



Illustrative purposes only

Proposed Gladstone Hub

Landscape Design:



Powerlink Procurement

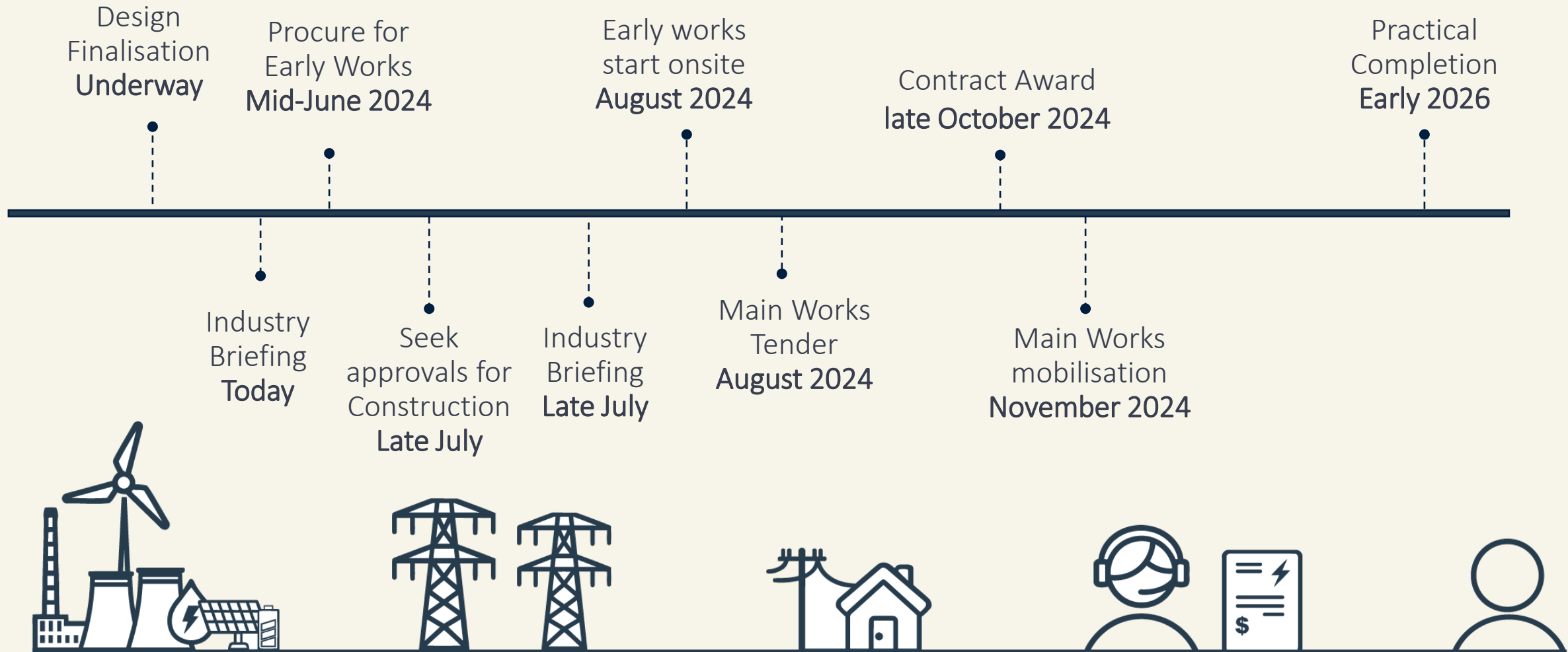
Assessment criteria to include:

- Technical capability
- Capacity to carry out the works
- Programme & ability to deliver in timeframes
- Organisational & Key Personnel experience & previous performance
- Commercial tendered price, including indirect and whole-of-life costs
- Contract conformance & Financial capacity
- Queensland Government procurement objectives including local procurement/supplier
- Economic, social & environment impacts



Illustrative purposes only

Proposed Timing



Early Works – Work Packages

Required works packages for Early works:

Surveying

Earthworks

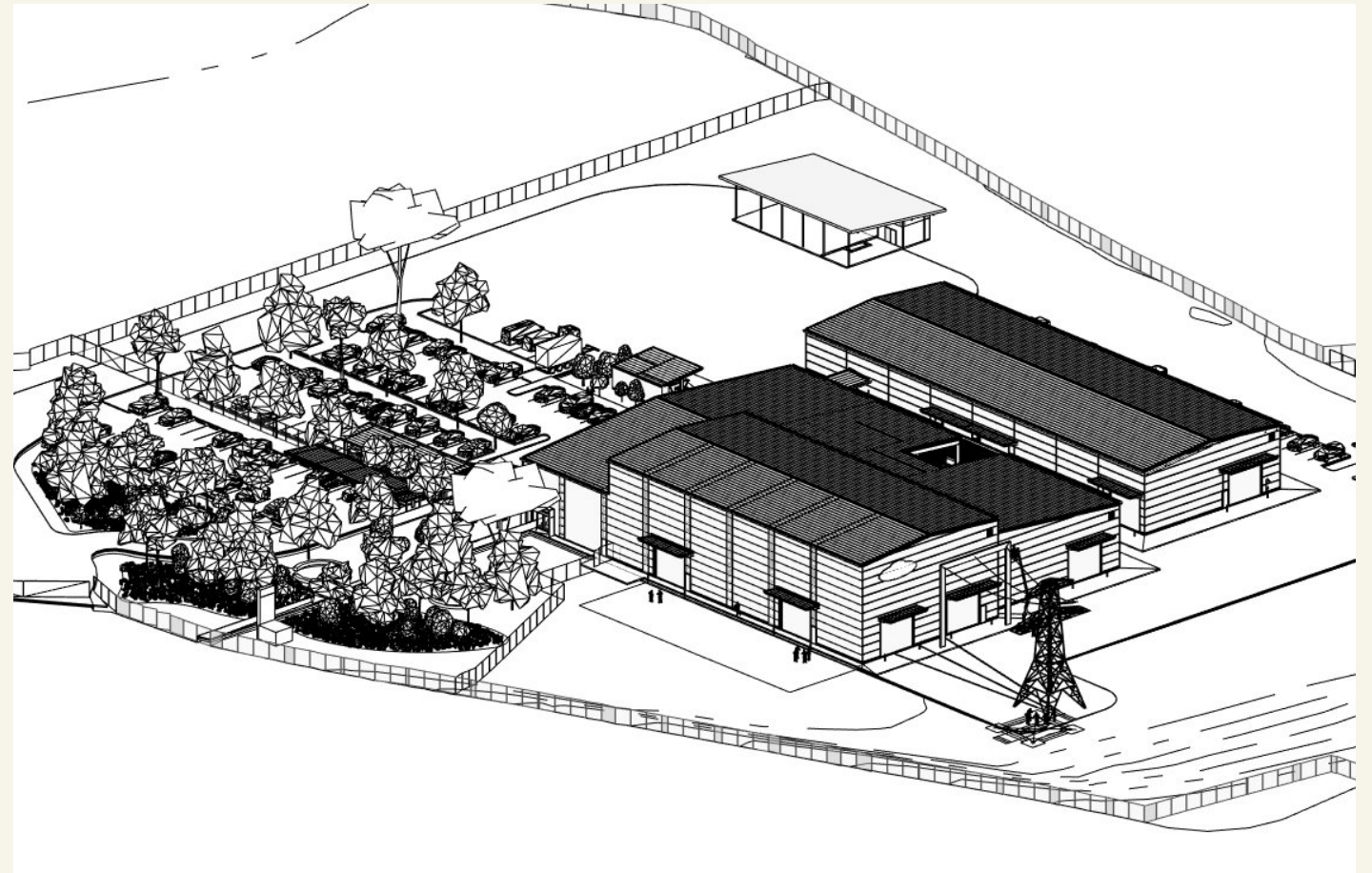
- Erosion and Sediment Control
- Site preparation (grubbing)

Fencing

- Chainmesh security fencing
- Shade cloth branding

Driveway crossover

- Civil works



Main Works – Work Packages

High-level work packages required for main works (further details provided on ICN):

Balustrades, handrails & steel work

Ceilings finishes

Communications

Concrete/foundations

Doors (timber & glazed)

Earthworks

Electrical services

Fencing & gates

Fire services (wet & dry)

Floor finishes

Formwork

Furniture & equipment

Glazing

Hydraulic services

Joinery

Landscaping - Hard

Landscaping - Soft

Lifts

Masonry & rendering

Mechanical services

Painting

Roofing

Security Services & CCTV

Stairs

Stormwater

Structural Steel

Sunshades

Toilet cubicles

Wall Cladding

Window blinds/curtains & security



Industry Capability Network (ICN) Queensland

Gladstone SuperGrid Training Centre and Transmission Hub

The numbers count

Since inception, we've helped local businesses find over \$50B+ worth of contracts to keep them working and growing.



\$54.3B+

Value of contracts awarded to Australian and New Zealand companies



400+

Australian and New Zealand suppliers joining every month



100+

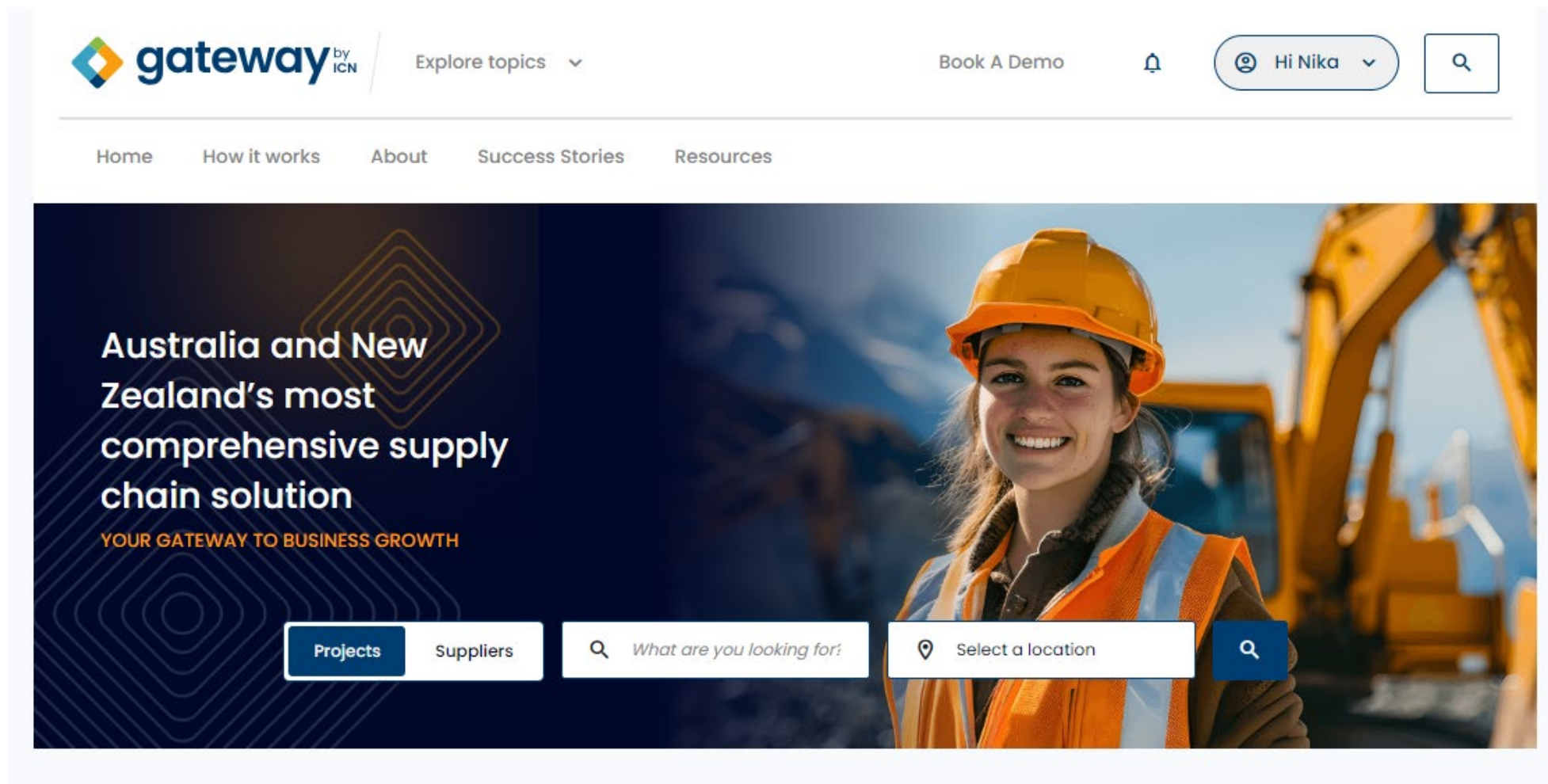
Industry Specialists working to help save time and money in the procurement process



95K

Contracts awarded to companies through ICN

Gateway by ICN



The screenshot shows the homepage of the Gateway by ICN website. At the top left is the Gateway by ICN logo. To its right is a navigation menu with 'Explore topics' and a dropdown arrow. Further right are links for 'Book A Demo', a notification bell icon, a user profile button labeled 'Hi Nika' with a dropdown arrow, and a search icon. Below this is a horizontal navigation bar with links for 'Home', 'How it works', 'About', 'Success Stories', and 'Resources'. The main content area features a large banner image of a smiling woman in a yellow hard hat and safety vest at a construction site. On the left side of the banner, the text reads: 'Australia and New Zealand's most comprehensive supply chain solution' followed by 'YOUR GATEWAY TO BUSINESS GROWTH' in orange. At the bottom of the banner are four interactive elements: a 'Projects' button, a 'Suppliers' button, a search bar with the placeholder text 'What are you looking for?' and a magnifying glass icon, and a location selector with a location pin icon and the text 'Select a location' followed by a magnifying glass icon.

Expression of Interest (EOI)



Overview Work Packages

Overview

In September 2022, the Queensland Government released its Queensland Energy and Jobs Plan (QEJP).

The QEJP sets out a path to transform the power system by 2035 with over \$62b of estimated capital projects to be funded across public and private sectors. The result will be a Queensland SuperGrid that will provide renewable energy, storage and network infrastructure we need to power our industries, businesses and homes.

As part of this growth, the Queensland Government has committed to establishing a SuperGrid Training Centre and Transmission Hub at Gladstone (The Hub) – a purpose-built facility to help equip a regional workforce to deliver Queensland's energy future.

The Hub will broadly provide:

- A training facility to support specialised training for transmission industry workers
- A workplace for regionally-based and transient Powerlink employees to strengthen Powerlink's regional capacity and ability to deliver services in Central Queensland
- A customer-facing environment that will enhance engagement and connection opportunities with communities, landholders, customers and other stakeholders.

Powerlink purchased the site, Lot 13_SPI97908, from Economic Development Queensland.

Proposed project components include:

- Tools workshop and apprentice development areas
- Simulated HV Training Bay
- Factory Acceptance Testing (FAT) Panel Area and Test Benches
- Office and staff spaces
- Operational Warehouse
- Landscaped areas
- Hardstands and turnaround areas
- Carpark, including lighting
- Vehicle Washdown
- External Tower
- Internal access roads

DELIVERY SCHEDULE

Powerlink expects to progress early works on the project in August 2024, ahead of construction commencing in late 2024. The project is expected to be completed and operational by 2026.

Submitting an Expression of Interest (EOI)

Overview Work Packages

36 Total work packages Show me

WORK PACKAGE	FULL SCOPE EOI	PARTIAL SCOPE EOI	STATUS
Early works package			
Earthworks			25 May 2025 ● Open

Powerlink Queensland is undertaking a market evaluation to identify suitably capable, qualified local and regional businesses who have the ability, plant and access to a range of materials to undertake earthworks that comply with industry standards and environmental regulations.

Powerlink has selected specific expression of interest categories for businesses to ensure the best chance of evaluating the marketplace, and recognising where local and regional business can assist into the project.

This expression of interest is for all suppliers who have an Australian Business Number (ABN), and are suitably capable for the following items (below):

- Sediment Control
- Site Preparation (grubbing)

Please note*
All suppliers will be required to meet the awarded Main Works Contractors Prequalification standards.

Full Scope **Partial Scope**

[Expression of Interest](#)

[Download](#)

Note: You can fill out an Expression of Interest form exclusively on a computer or laptop device.

Submitting an Expression of Interest (EOI)

EXPRESSION OF INTEREST

Earthworks

Submissions close: 31 WEEKS, 2 DAYS, 12 HOURS, 36 MINS

Gladsstone Superfield Training Centre and Transmission Hub

1 Get started | 2 About your business | 3 Submitted

Some fields may be pre-filled using responses from other Expressions of Interest you have submitted previously. Please check all answers carefully as your qualification for this work package may rely on the answers provided.

General

Do you understand that this is an expression of interest (EOI) process - only to identify local market capability? *

Yes

No

Do you understand that you must be prepared to progress to Stage 2 (Invitation to Tender), if invited by Powerline Queensland? *

Yes

No

Please confirm that your company profile on the ICN Gateway is complete, up to date and accurate. *

Yes

No

In line with your ABN or ACN records, what is your business classification? *

Sole trader

PTY LTD

Trust

Joint venture

Other

Does your business qualify as a Small & Medium Enterprise (SME) (Australian owned business with less than 200 full-time equivalent employees)? *

Yes

No

Does your business have a site office (leased or owned) in the Gladstone Regional Council area? Must be able to provide evidence, if requested, in the form of a Rates Notice, SA Approval, or Lease Agreement. *

No, but within GRD

No, but outside GRD

Yes, within Gladstone Regional Council area

Please select your business's contract value range (SALE) for the last three years. *

\$ - \$500,000

\$500,000 - \$500,000

\$500,000 - 2 million

\$2 million - 5 million

\$5 million - 10 million

\$10 million +

Is your business prepared, if requested, to provide 2 Bank Guarantees each to the value of 25% of the contract sum (25% total)? *

Yes

No

Please select the contract value range(s) (SALE) that your business prefers and is able to bid on. *

\$ - \$500,000

\$500,000 - \$500,000

\$500,000 - 2 million

\$2 million - 5 million

\$5 million - 10 million

\$10 million +

Your preferred contract value listed in previous question was what % of your business resources? *

0%

25%

50%

75%

90%

95%

Approximately how much of the company annual revenue is subcontracted to another construction contractor? *

0%

25%

50%

75%

90%

What Tier contractor is your business? To find out which classification your business is click here: https://www.icnq.org.au/services/tier_contractor_classification.html

Tier 1

Tier 2

Tier 3

Insurance

Does your business possess Certificates of Currency for the following insurances? *

	Yes	No
Professional indemnity	<input type="radio"/>	<input type="radio"/>
Public and Product liability	<input type="radio"/>	<input type="radio"/>
Workers Compensation / Workcover	<input type="radio"/>	<input type="radio"/>
Motor Vehicle	<input type="radio"/>	<input type="radio"/>
Other	<input type="radio"/>	<input type="radio"/>

Please confirm that all certificates of currency for insurance policies held by your organisation have been submitted to the 'Insurance' section of your company profile on the ICN Gateway. *

Yes

No

Please confirm that all certificates of currency for management systems held by your organisation have been uploaded to the 'Compliance' section of your company profile on the ICN Gateway. *

Yes

No

Has your company implemented the following Management System related policies/procedures? *

Emergency Management Policy

Environmental Policy

Fatigue Management Policy

Fitness for Work Policy

Health and Safety Policy

Quality Policy

Hazard or Risk Register

Health and Safety

Has your business implemented a formal process for recording and reporting safety and environmental incidents? *

Yes

No

Has your business implemented a formal process for incident investigation and management? *

Yes

No

Technical

Has your business ever had experience in supplying or subcontracting to a Training Facility project in Australia? *

Yes, project


Some Tips for Strong EOIs

Help project proponents understand your business capabilities and value proposition.

- Update your ICN Gateway Profile first.
 - Answer all Questions
 - Attach requested documentation
 - Discuss with colleagues for an optimal response
 - Submit on time!!
 - Treat each EOI as a new tendering process regardless of previous experience.
-
- And if any questions, reach out to ICN Consultant listed on the project page.



INDUSTRY CAPABILITY NETWORK
EOI Users Guide

 40years of ICN
Helping Local Win
1981-2021



 ICN Industry
Capability
Network

**YOUR GUIDE TO SUBMITTING
AN EXPRESSION OF INTEREST**

Gateway by ICN is the pivotal connection between major projects and suppliers. In an increasingly competitive market, we give you access to a sophisticated business network that helps boost your business, with an immediate connection to billions of dollars worth of project opportunities.

Expressing interest in work on Gateway is simply putting your hand up for work. You can express interest in individual work packages on Gateway. By doing this, it tells either the ICN Industry Specialist or project proponent that you believe your company can do the works listed and that you would like your company's capability assessed.





Thank you.

Abhiney Arora
Executive Director

Driving economic growth through our trusted network.

We build powerful procurement and supply chain tools, offer expert advice and support and everything you need to get work and get work done.

ICN Queensland

Phone

(07) 3364 0670

Email

info@icnqld.org.au



icn.org.au
gateway.icn.org.au

Supplier Expression of Interest



Powerlink encourages local industries interested in supplying the project to register an expression of interest (EOI) through the ICN Gateway webpage.

Please ensure that:

- Your company profile on the ICN Gateway is complete, up-to-date and accurate, including electing to be notified via e-mail of supply opportunities.
- You register your interest as a full or partial-scope supplier (where applicable), and
- You respond to all project and work package-specific question

ICN Link:

<https://gladstonesupergrid.icn.org.au>

Any questions?

Get in touch

ICN Site

<https://gladstonesupergrid.icn.org.au>

Email

gladstonehubproject@powerlink.com.au

Website

www.powerlink.com.au
[Gladstone SuperGrid Training Centre & Transmission Hub Project](#)

www.powerlink.com.au

