

# Bungaban Wind Farm Connection Project

POWERLINK QUEENSLAND

## About Powerlink Queensland

Powerlink is a leading provider of high voltage electricity transmission network services, combining innovation with insight to deliver safe, cost effective and reliable solutions.

We own, develop, operate and maintain the high voltage electricity transmission network in Queensland.

Our network extends 1,700km from north of Cairns to the New South Wales border. We aim to connect Queenslanders to a world class-energy future, providing electricity to more than five million Queenslanders and 253,000 businesses.

## Project overview

A key part of Powerlink's work involves the planning and delivery of the power system, and efficient and cost-effective connection of renewable energy sources. We are actively working with renewable energy proponents who want to connect their projects to the electricity grid.

Windlab has engaged Powerlink to investigate connection options for their proposed Bungaban Wind Farm, 40km from Wandoan. The 1.4GW wind farm will have the capacity to generate enough energy to power 700,000 homes and enhance the security and reliability of the electricity network by diversifying the generation mix and increasing transmission capacity in the region.

The transmission infrastructure proposed for the project includes one new substation and a new 275kV transmission line between Powerlink's existing Wandoan South Substation and the wind farm development.

Powerlink has started exploring options for the transmission line and engaging with stakeholders in the region to encourage their feedback and input. This newsletter shares information on the high-level study area identified for this project.

*Powerlink acknowledges the Traditional Owners and their custodianship of the lands and waters of Queensland and in particular, the lands on which we operate. We pay our respect to their Ancestors, Elders and knowledge holders and recognise their deep history and ongoing connection to Country.*



[powerlink.com.au/bungaban](http://powerlink.com.au/bungaban)

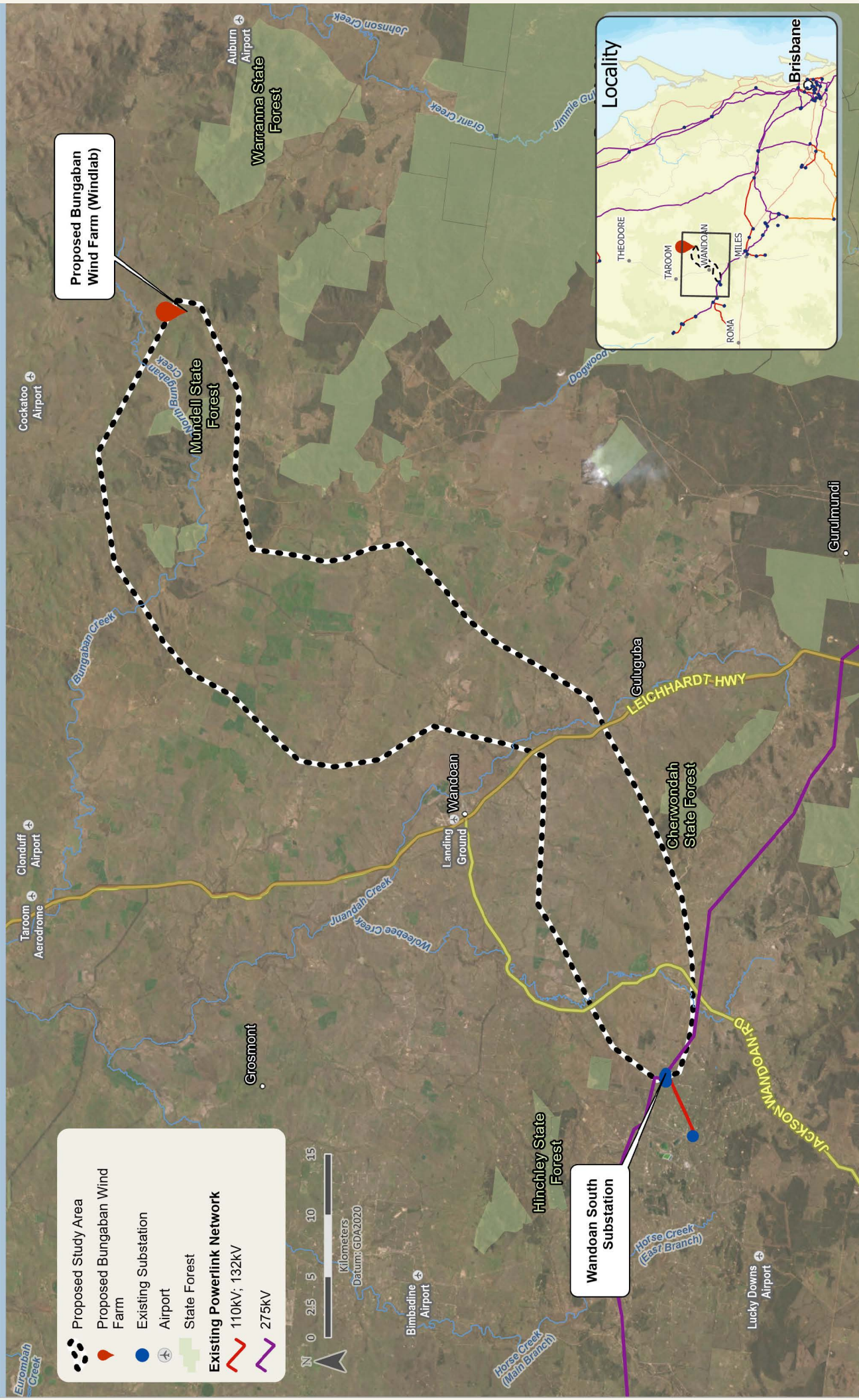


**SAFE FOR LIFE**  
Everyone. Everywhere. Everyday.





# Bungaban Wind Farm Connection Project Study Area



## Frequently asked questions

### How was the study area identified?

We engaged consultants WSP to conduct desktop analysis of an area of land encompassing the proposed wind farm site and Powerlink's Wandoan South Substation.

The purpose of their analysis is to help identify constraints including residential properties, cropping land, environmentally sensitive land or habitat, and areas of cultural heritage significance.

WSP created a map of these constraints which has identified an area of land referred to by Powerlink as the 'study area'.

Powerlink is now seeking feedback from landholders, Traditional Owner groups, community members and other stakeholders in the surrounding area to provide their local insights that will help guide our planning.

### How will feedback be used?

The feedback we receive helps us to better understand land use in the region and areas that should be avoided.

This will assist Powerlink in being able to identify potential corridor options within the study area that could accommodate a transmission line to connect the proposed wind farm to the electricity grid.

Through engagement with community to gather insights and feedback, we aim to collaboratively identify the most suitable location with the least overall impact from a social, environmental and economic perspective.

### How can I provide feedback?

Feedback can be provided in a number of ways:

- **Face-to-face:** upcoming community information drop-in sessions
- **Phone:** 07 3898 4838
- **Email:** [sqprojects@powerlink.com.au](mailto:sqprojects@powerlink.com.au)
- **Website:** [powerlink.com.au/bungaban](http://powerlink.com.au/bungaban)

Our project webpage has links to an interactive map where you can drop pins and make comments within the study area.

This page also features a feedback survey which we encourage you to complete and you can also choose to sign up for regular project-related email updates.

We are inviting feedback on the study area until **5pm Sunday 1 September 2024**.



## Your insights are important

As part of the early works for this project, Powerlink's high-level study area incorporates the wind farm location and an area of land including the Wandoan South Substation.

When investigating the location for a transmission line, we engage with the community at all stages through our Transmission Easement Engagement Process to help determine the most appropriate location.

Powerlink is at step one of this process, where we introduce communities to the high-level study area we are investigating and seek their feedback and insights to help inform our planning. Read about Powerlink's engagement process at [powerlink.com.au/brochures/transmission-easement-engagement-process](https://powerlink.com.au/brochures/transmission-easement-engagement-process).

## Get involved

We are offering the community an opportunity to meet with us in person at our community drop-in information sessions. We are looking forward to hosting the first of these in early August 2024 and we invite you to come along.

### Saturday 3 August

9am- 11am | **Chinchilla**  
Chinchilla Cultural Centre, 80-86 Heeney Street

1pm- 3pm | **Miles**  
Miles Leichardt Centre, 29 Dawson Street

### Sunday 4 August

10am-1pm | **Wandoan**  
Wandoan Cultural Centre, 6 Henderson Road

3pm-5pm | **Taroom**  
Leichardt Hotel, 23 Dawson Street

### Tuesday 6 August

7am-10am | **Wandoan**  
Wandoan Cultural Centre, 6 Henderson Road

3pm-6pm | **Taroom**  
Taroom Hall, 16 Yaldwyn Street

## Engagement timeline

- **July 2024**  
Early engagement with Council, Traditional Owners and other stakeholders
- **August 2024**  
Community information drop-in sessions for feedback
- **September 2024**  
Use feedback to develop corridor options
- **October 2024**  
Release corridor options for feedback
- **November 2024**  
Community information drop-in sessions for feedback
- **November - December 2024**  
Use feedback to develop recommended corridor
- **January 2025**  
Release recommended corridor
- **February 2025**  
Community information drop-in sessions for feedback
- **March-April 2025**  
Release of final corridor

## Further information

If you have any questions about the Bungaban Wind Farm Connection Project or would like to provide your feedback, please contact our project team on **07 3898 4838** or [sqprojects@powerlink.com.au](mailto:sqprojects@powerlink.com.au).

If you would like to be kept informed of future in-person community information drop-in sessions or any online opportunities we are planning, please scan the QR code below and register your details so we can keep in touch.



Use the QR code or visit [powerlink.com.au/bungaban](https://powerlink.com.au/bungaban) to access our project page and complete the feedback form.