

Gladstone SuperGrid Training  
Centre and Transmission Hub

# Supplier briefing

Monday 22 July 2024



# Acknowledgement

Powerlink acknowledges the Traditional Owners and their custodianship of the lands and waters of Queensland and in particular, the lands on which we operate.

Today we acknowledge the Bailai, Gurang, Gooreng Gooreng, Taribelang Bunda peoples on whose lands we meet this morning.

We pay our respect to their ancestors, Elders and knowledge holders and recognise their long history and deep ongoing connection to Country.

1. Welcome and project team introduction

---

2. Powerlink and the energy transformation

---

3. Project brief

---

4. Project timing

---

4. Work packages

---

5. Procurement process

---

6. Industry Capability Network

---

7. Questions

---

---

# Powerlink Queensland



*Connecting Queenslanders to a world-class energy future*



**Queensland Government owned** – one of Australia’s leading transmission network companies



We own, develop, operate and maintain the **high voltage transmission** network in Queensland



Our network runs **1,700km** from north of Cairns to the New South Wales border



We provide network **connections** to large-scale generators and major industrial customers



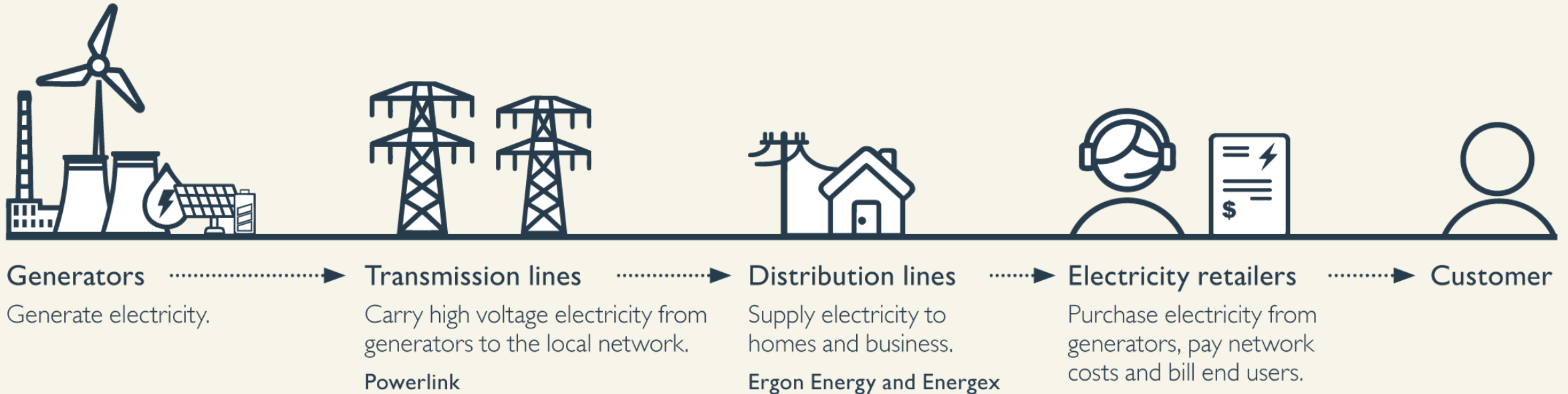
Provide electricity to more than **five million Queenslanders** and **253,000 businesses**



**15,358** circuit kilometers of transmission lines and **147** substations

# The role of transmission

## Electricity supply chain

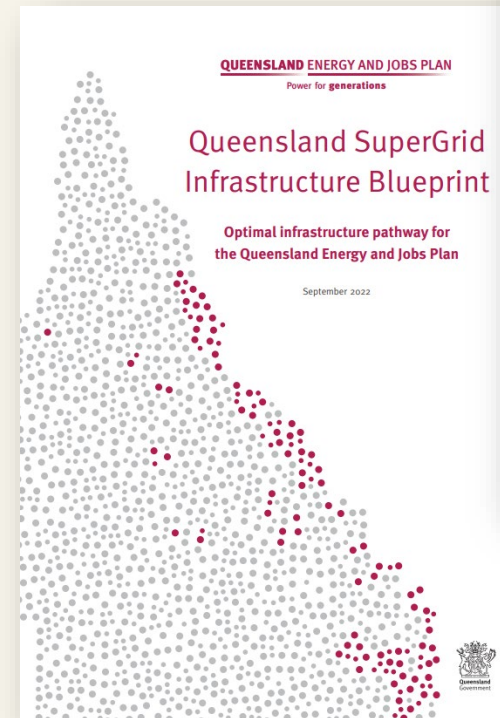


# The energy transformation

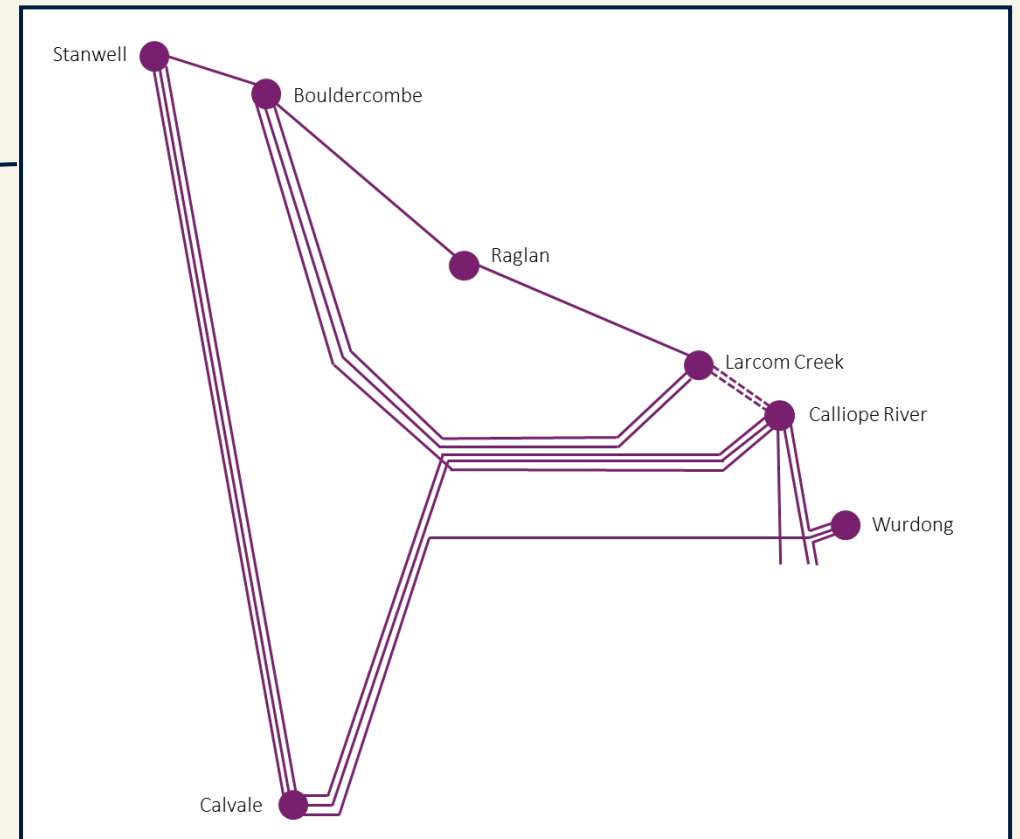
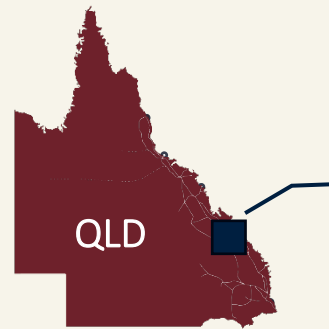
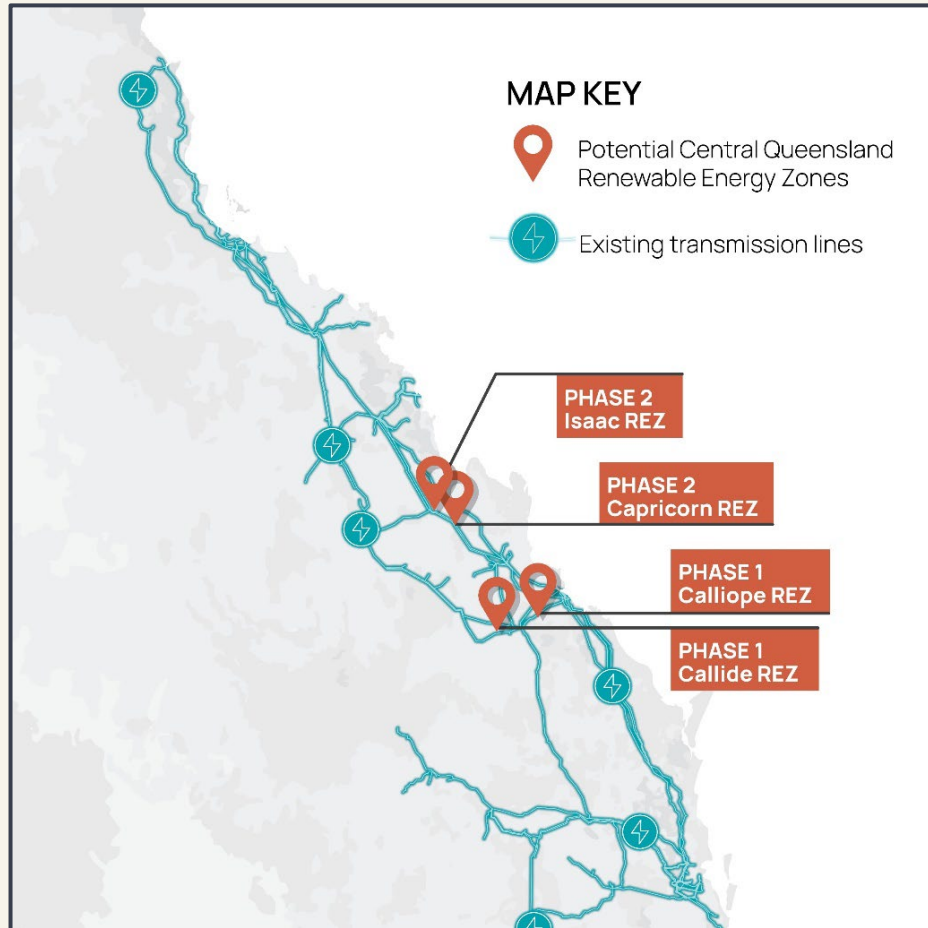
The Australian Government has set out to achieve a Net Zero Emissions target by 2050.

The Queensland Government's plan to meet these targets are outlined in the Queensland Energy and Jobs Plan (2022), and the Queensland SuperGrid Infrastructure Blueprint (2022).

- The Queensland SuperGrid Infrastructure Blueprint identified a need for reinforcement of the Gladstone network because of either:
  - The closure of the Gladstone Power Station;
  - An increased demand for electricity from industry who are also decarbonising;
  - Or both.



# Energy Transformation





# The energy transformation

This is why the **Gladstone SuperGrid Training Centre and Transmission Hub** is so important.

Powerlink will be completing a significant number of projects in Gladstone and the broader Central Queensland region in years to come.

We are constructing this purpose-built facility to establish a regional presence and create opportunities for local participation in the transition to renewable energy in Queensland.





# Location

## Gladstone Power Station



H067 Calliope River Substation

Proposed site long term hub site

**Site** - Lot 13 Clinton Industrial Estate, 47 Bensted Road, Gladstone QLD





# SuperGrid Training Centre and Transmission Hub

A contemporary workplace that includes:

- 52 fixed work points, 36 flexible work points (quiet areas, meeting rooms) and an innovation/collaboration zone
- Common lunch and wellness spaces with End-Of-Trip (EOT) facilities (gender-inclusive), rooms for parents, multi-faith and first aid
- 130 car parks



*Illustrative purposes only*

# SuperGrid Training Centre and Transmission Hub

Operational spaces that include:

- field-based staging, investigation and tools workshop
- an operational warehouse space of 1,800sqm
- vehicle washdown and weighbridge
- dedicated Hardstand of 1,465sqm across the site
- space for **future growth** is 16,000sqm south of the site.



North-facing view

*Illustrative purposes only*



# SuperGrid Training Centre and Transmission Hub

South-facing view

A world-class training facility that includes:

- simulated high voltage (HV) training bay with control room
- 3 x training rooms with supporting break-out spaces.
- apprenticeship workspaces
- outdoor and indoor towers

*Illustrative purposes only*



View of the simulated High Voltage (HV) Training Bay



Customer and stakeholder-facing areas that includes reception with a meeting rooms



# Site context



## Site characteristics

Land area: 61,090m<sup>2</sup>

Zoning: Medium impact industry

Local Authority: Gladstone Regional Council

Constraints: Embankment, easement and site access

Design considerations: Noise from the roads, rail corridors, airport, and site characteristics, e.g. sun and wind impacts.

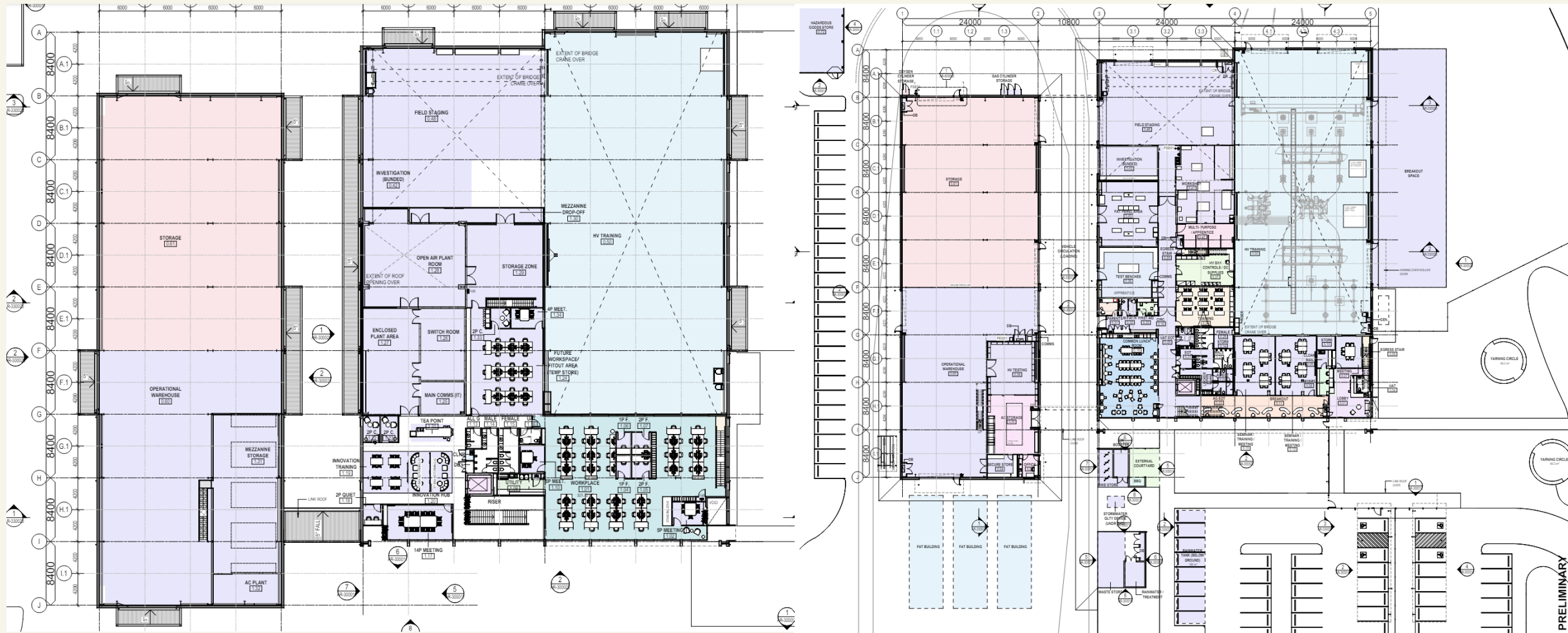
Grass Embankment

Easement 15m

Adjoining Site



# Proposed Gladstone Hub – floor plans



Illustrative purposes only



# Proposed Gladstone Hub – Landscape design



*Illustrative purposes only*





# Powerlink procurement

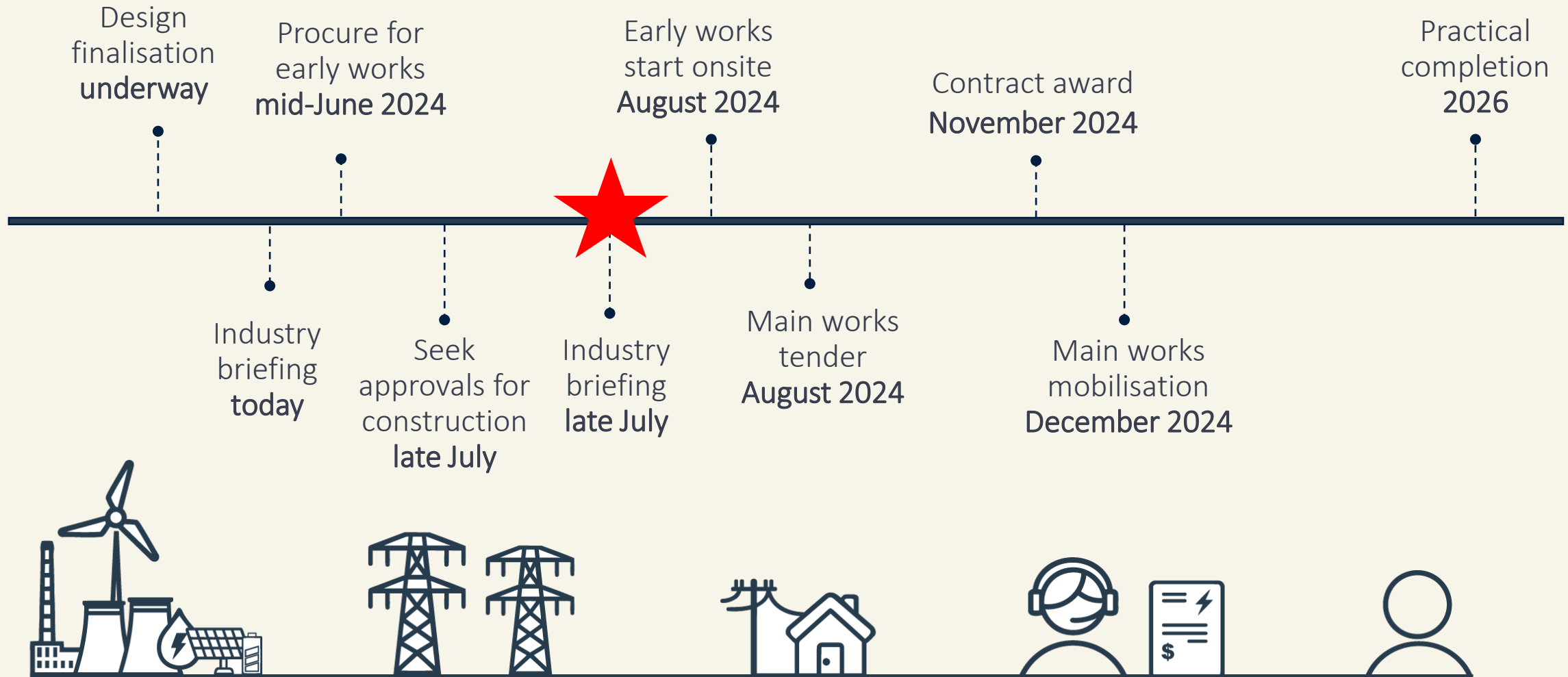
## Assessment criteria to include:

- technical capability
- capacity to carry out the works
- programme and ability to deliver in timeframes
- organisational and key personnel experience and previous performance
- commercial tendered price, including indirect and whole-of-life costs
- contract conformance and financial capacity
- Queensland Government procurement objectives including local procurement/supplier
- economic, social and environment impacts



*Illustrative purposes only*

# Proposed project timing



# Main works – work packages

High-level work packages required for main works (further details provided on ICN):

## Principal contractor

Balustrades, handrails and steel work

Ceilings finishes

Communications

Concrete/foundations

Structural steel

Mechanical services

Doors (timber and glazed)

Electrical services

Fencing and gates

Fire services (wet and dry)

Floor finishes

Formwork

Furniture and equipment

Glazing

Painting

Roofing

Security services and CCTV

Stairs

Stormwater

Sunshades

Toilet cubicles

Wall cladding

Window blinds/curtains and security

Internal wall linings

Joinery

Landscaping - hard

Landscaping - soft

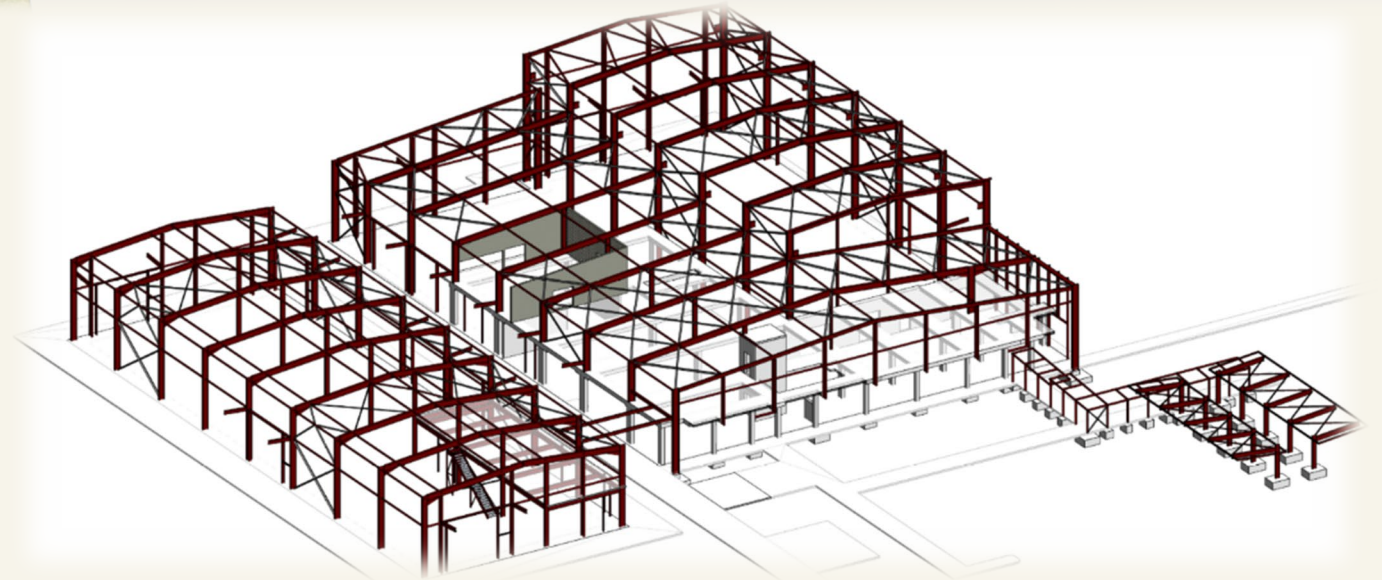
Lifts

Masonry and rendering

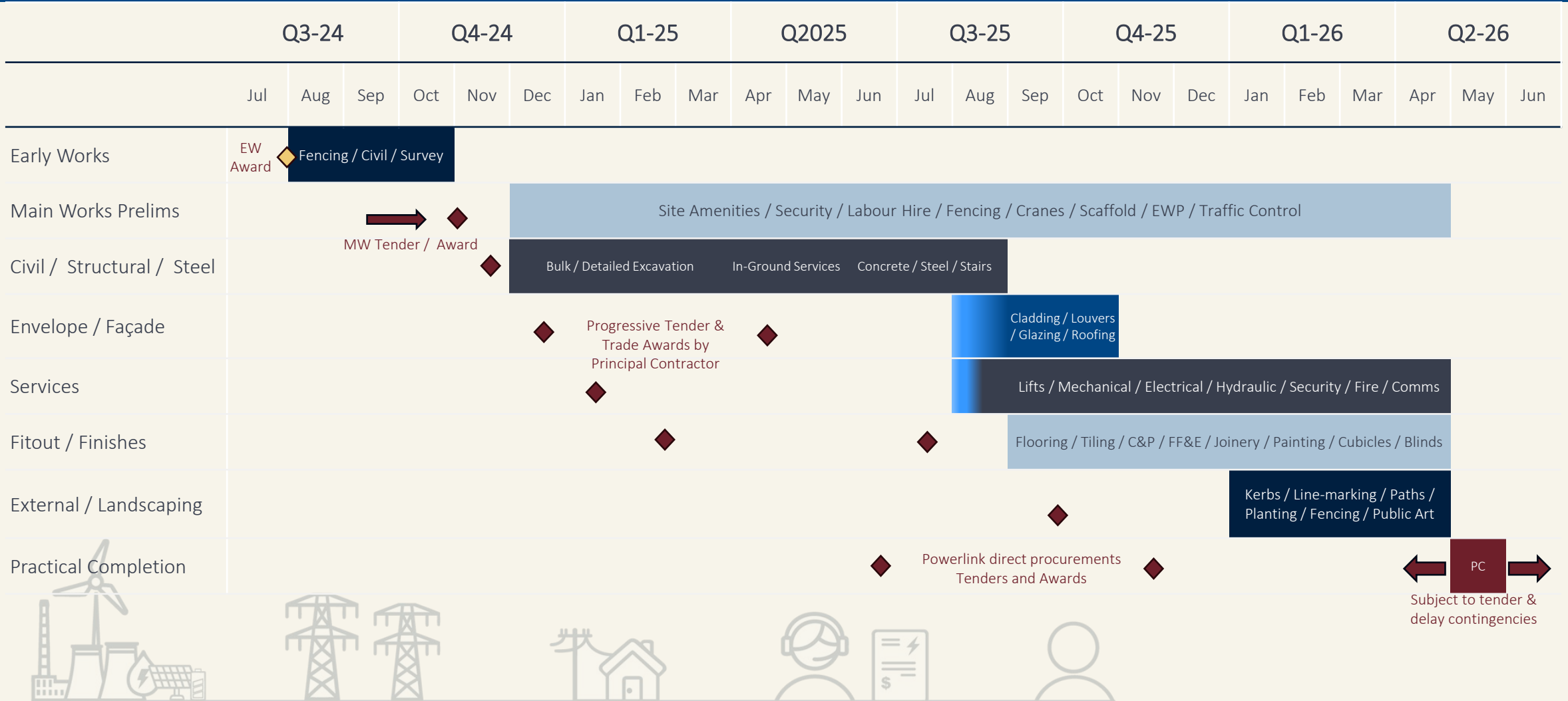
# Construction overview

- 61,100m<sup>2</sup> site
- 7,400m<sup>3</sup> cut
- 3,700m<sup>3</sup> fill
- 8,900m<sup>2</sup> GFA
- 1,800m<sup>2</sup> warehouse (sprinklered)
- 130 car parks
- 230t Reo & 300t Structural steel
- 2x air-cooled chillers
- 1x transformer and bump in genset
- 100kW photovoltaic
- 750m<sup>2</sup> carpet
- 135 chairs
- 52 workstations

\* all subject to change in design completion



# Work packages timeline [all tasks indicative]







# Industry Capability Network (ICN) Queensland

Gladstone SuperGrid Training Centre and Transmission Hub

Driving economic growth in Australia  
and New Zealand by supporting local  
businesses through a trusted  
Network.



# The numbers count

Since inception, we've helped local businesses find over \$50B+ worth of contracts to keep them working and growing.



**\$54.3B+**

Value of contracts awarded to Australian and New Zealand companies



**400+**

Australian and New Zealand suppliers joining every month



**100+**

Industry Specialists working to help save time and money in the procurement process



**95K**

Contracts awarded to companies through ICN

# Gateway by ICN



Explore topics ▾

Book A Demo

Login

Join Now



Home

How it works

About

Success Stories

Resources

Australia and New Zealand's most comprehensive supply chain solution

YOUR GATEWAY TO BUSINESS GROWTH

Projects

Suppliers



What are you looking for?



Select a Location



## Suppliers can:

- Create a 'new' company profile
- Login to an existing company profile
- Search for project & supply opportunities

## Buyers can:

- Search for suppliers (business to business)



Explore topics ▾

Book A Demo



Hi Abhiney ▾



Dashboard

EOIs ▾

Business Profile ▾

Market Channel ▾

Documents ▾

Account ▾

DASHBOARD

## ICN Queensland

Switch company ▾

Subscriptions

Tier Assessments

Remove Profile

Projects

Suppliers

🔍 What are you looking for?

📍 Select a Location



LOCATION

Eight Mile Plains, QLD




MEMBERSHIP

Premium



PROFILE ID

81533

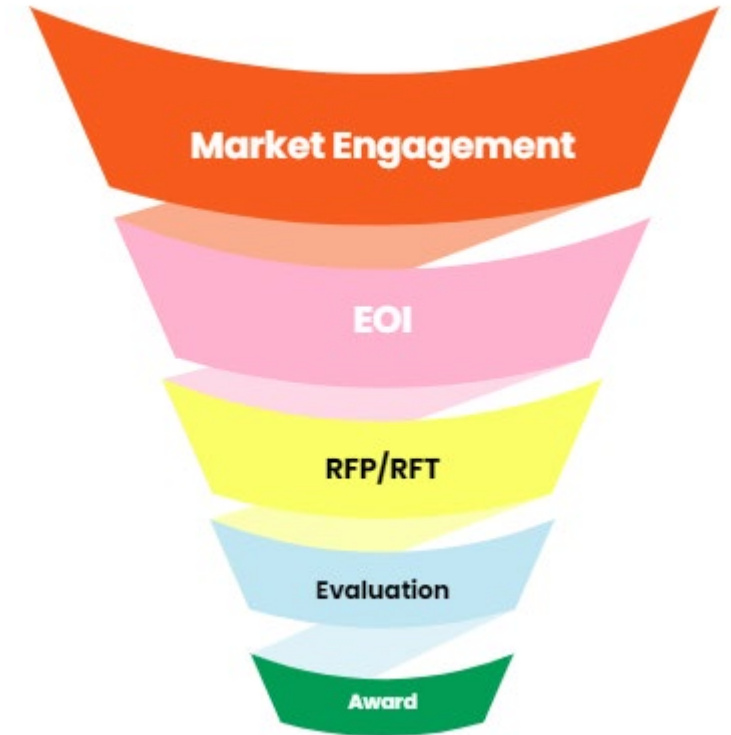
Edit/View Profile 

Company profile

Financial risk rating



# EOI's importance in a procurement process





# Expression of Interest (EOI)



Overview Work Packages

## Overview

In September 2022, the Queensland Government released its Queensland Energy and Jobs Plan (QEJP).

The QEJP sets out a path to transform the power system by 2035 with over \$62b of estimated capital projects to be funded across public and private sectors. The result will be a Queensland SuperGrid that will provide renewable energy, storage and network infrastructure we need to power our industries, businesses and homes.

As part of this growth, the Queensland Government has committed to establishing a SuperGrid Training Centre and Transmission Hub at Gladstone (The Hub) – a purpose-built facility to help equip a regional workforce to deliver Queensland's energy future.

The Hub will broadly provide:

- A training facility to support specialised training for transmission industry workers
- A workplace for regionally-based and transient Powerlink employees to strengthen Powerlink's regional capacity and ability to deliver services in Central Queensland
- A customer-facing environment that will enhance engagement and connection opportunities with communities, landholders, customers and other stakeholders.

Powerlink purchased the site, Lot 13\_SPI97908, from Economic Development Queensland.

Proposed project components include:

- Tools workshop and apprentice development areas
- Simulated HV Training Bay
- Factory Acceptance Testing (FAT) Panel Area and Test Benches
- Office and staff spaces
- Operational Warehouse
- Landscaped areas
- Hardstands and turnaround areas
- Carpark, including lighting
- Vehicle Washdown
- External Tower
- Internal access roads

## DELIVERY SCHEDULE

Powerlink expects to progress early works on the project in August 2024, ahead of construction commencing in late 2024. The project is expected to be completed and operational by 2026.

# Submitting an Expression of Interest (EOI)

37 Total work packages | 37 Open work packages

Work packages

WORK PACKAGE	FULL SCOPE EOI	PARTIAL SCOPE EOI	STATUS
<b>Early works package</b>			
Driveway crossover	25 May 2025		Open
Earthworks	25 May 2025		Open
Fencing	25 May 2025		Open
Surveying	25 May 2025		Open
<b>Main works package</b>			
Balustrades, handrails and steel work	25 May 2025		Open
Ceilings (plaster, ceiling tiles, acoustic ceilings, fibre cement ceiling)	25 May 2025		Open
Communications	25 May 2025		Open
Concrete/foundations	25 May 2025		Open
Doors (timber and glazed)	25 May 2025		Open
Earthworks	25 May 2025		Open

Open = green

Closed = grey

Awarded = amber

Click on the + to read more about the Work Package

Read the scope of work developed for the work package.

Masonry and rendering	25 May 2025	Open
Mechanical services	25 May 2025	Open

Powerlink Queensland is undertaking a market evaluation to identify suitably capable, qualified local and regional businesses who have the ability, plant and access to a range of materials to undertake mechanical services that comply with industry standards and environmental regulations.

Powerlink has selected specific expression of interest categories for businesses to ensure the best chance of evaluating the marketplace, and recognising where local and regional business can assist into the project.

This expression of interest is for all suppliers who have an Australian Business Number (ABN), and are suitably capable for the following items (below):

- ductwork supply or install
- chillers/pac units
- BMS
- industrial fans/whirlybirds
- mechanical piping
- exhaust

Please note\*  
All suppliers will be required to meet the awarded Main Works Contractors Prequalification standards.

Full Scope Partial Scope

Expression of Interest

Download

Note: You can fill out an Expression of Interest form exclusively on a computer or laptop device.

# Submitting an Expression of Interest (EOI)

EXPRESSION OF INTEREST

Submissions close

11: 21 WEDS 12 21 HOURS 21 MINS

**Earthworks**

Gladstone SuperGrid Training Centre and Transmission Hub

Get started | About your business | Submitted

**About your business**

Some fields may be pre-filled using responses from other Expressions of Interest you have submitted previously. Please check all answers carefully as your qualification for this work package may rely on the answers provided.

**General**

Do you understand that this is an expression of interest (EOI) process, and is subject to tender capability? \*

Yes  No

Do you understand that you must be prepared to progress to Stage 2 (Invitation to Tender), if invited by Powell & Coyle? \*

Yes  No

Please confirm that your company profile on the ICN Gateway is complete, up to date and accurate. \*

Yes  No

In line with your ABN or ACN records, what is your business classification? \*

Sole Trader  Pty Ltd  Trust  Joint Venture  Other

Does your business qualify as a Small & Medium Enterprise (SME) (Australian owned business with less than 200 full time equivalent employees)? \*

Yes  No

Does your business have a site office (leased or owned) in the Gladstone Regional Council area? \*You do not need to provide evidence, if requested, in the form of a Sole Trader, SA Approval or Lease Agreement. \*

Yes, but within QLD  No, but outside QLD  Yes, within Gladstone Regional Council area

Please select your business turnover or your contract value range (SAUD) for the last three years. \*

0 - \$500,000  \$500,000 - \$100,000  \$500,000 - 2 million  \$2 million - 5 million  \$5 million - 20 million  \$20 million +

Is your business prepared, if requested, to provide 2 Bank Guarantees each to the value of 2.5% of the contract sum (5% total)? \*

Yes  No

Please select the contract value range(s) (SAUD) that your business prefers and is able to bid on. \*

0 - \$500,000  \$500,000 - \$100,000  \$500,000 - 2 million  \$2 million - 5 million  \$5 million - 20 million  \$20 million +

Your preferred contract value limit at previous question would be what % of your business resources? \*

0%  25%  50%  75%  90%  100%

Approximately how much of the company annual revenue is subcontracted to another construction contractor? \*

0%  25%  50%  75%  90%

What Tier contractor is your business? To find out which classification your business is click here: [https://www.icnqld.org.au/entries/tier\\_assessment.html](https://www.icnqld.org.au/entries/tier_assessment.html) \*

Tier 1  Tier 2  Tier 3

## Finance

Please confirm your business's average annual turnover range (SAUD) for the last three years. \*

0 - \$100,000  \$100,000 - 500,000  \$500,000 - 2 million  \$2 million - 5 million  \$5 million - 20 million  \$20 million +

Is your business prepared, to provide 2 Bank Guarantees each to the value of 2.5% of the contract sum (5% total)? \*

Yes  No

Please select the contract value range(s) (SAUD) that your business prefers and is able to bid on. \*

0 - \$100,000  \$100,000 - \$500,000  \$500,000 - 2 million

## Insurance

Does your business possess Certificates of Currency for the following insurances? \*

	Yes	No
Professional Indemnity	<input type="radio"/>	<input type="radio"/>
Public and Product Liability	<input type="radio"/>	<input type="radio"/>
Workers Compensation / Workcover	<input type="radio"/>	<input type="radio"/>
Motor Vehicle	<input type="radio"/>	<input type="radio"/>
Other	<input type="radio"/>	<input type="radio"/>

Please confirm that all certificates of currency for insurance policies held by your organisation have been uploaded to the Insurance section of your company profile on the ICN Gateway. \*

Yes  No

Please confirm that all certificates of currency for management systems held by your organisation have been uploaded to the Compliance section of your company profile on the ICN Gateway. \*

Yes  No

Has your company implemented the following management system related policies/procedures? \*

Emergency Management Policy  Environmental Policy  Fatigue Management Policy  Fitness for Work Policy  Health and Safety Policy  Quality Policy  Hazard or Risk Register

## Health and Safety

Has your business implemented a formal process for recording and reporting safety and environmental incidents? \*

Yes  No

Has your business implemented a formal process for incident investigation and management? \*

Yes  No

## Technical

Has your business ever had experience in supplying or subcontracting to a Training Facility project in Australia? \*

Yes, 1 project

# Some Tips for Strong EOIs

- ICN Gateway business profile that is fully complete, up-to-date and accurate
- Capability that matches or exceeds the scope of work
- Previous experience in providing similar goods or services/ near the project location (local content)
- Demonstrated commitment to safety, quality, innovation and delivery in full on time (DIFOT)
- Minimum standards of insurances, certifications, safety and other commitments to Powerlink's standard.

ICN consultant evaluates EOI responses in accordance with the project's evaluation criteria. EOI submissions are evaluated as either go/ no-go

All EOI submissions are provided to buyer for their consideration regardless of ICN consultants evaluation.

# Supplier expression of interest



Powerlink encourages local industries interested in supplying the project to register an expression of interest (EOI) through the ICN Gateway webpage.

Please ensure:

- Your company profile on the ICN Gateway is complete, up-to-date and accurate, including electing to be notified via e-mail of supply opportunities.
- You register your interest as a full or partial-scope supplier (where applicable).
- You respond to all project and work package-specific questions.

ICN link:

<https://gladstonesupergrid.icn.org.au>



# Get in touch

## ICN Site

[gladstonesupergrid.icn.org.au](http://gladstonesupergrid.icn.org.au)

## Email

[gladstonehubproject@powerlink.com.au](mailto:gladstonehubproject@powerlink.com.au)

## Website

[powerlink.com.au/gladstonehub](http://powerlink.com.au/gladstonehub)

