

Recommended Corridor and Substation Site Selection Report

POWERLINK QUEENSLAND

About Powerlink

Powerlink is a Queensland Government Owned Corporation playing a central role in the energy transition. We are a leading provider of electricity transmission services, delivering a safe, cost effective and reliable transmission network for Queenslanders. We own, develop, operate and maintain the electricity transmission network in Queensland which extends 1,700 kilometres from north of Cairns to the New South Wales border.

Local investment and benefits

The project offers significant employment opportunities – both locally and regionally:

- we will work with our principal contractor to ensure local businesses are given every opportunity to be involved
- we want to contribute to the area as a partner for the long term and provide benefits via local investment
- we know each community is different, so we will work with you to make sure we can make a positive and long lasting contribution as part of the project
- we welcome your thoughts and ideas along the way on how we can better support the community.

About CopperString 2032

In March 2023, Powerlink took ownership of the CopperString 2032 project. The project will initially involve building 840 kilometres (km) of new electricity transmission lines from just south of Townsville to Mount Isa and connect Queensland's North West Minerals Province to the National Electricity Market for the first time in Australia's history.

Powerlink recently completed a review of the section of the project between the Burdekin River east to the proposed Mulgrave substation site. This review identified significant constructability, access and operational issues for the proposed transmission line corridor and substation site due to very steep terrain and the requirement to construct significant access tracks and waterway crossings through areas that experience flooding and inundation.

Burdekin River to Reid River – Recommended Corridor and Substation Site Selection Report (RCSSSR)

Powerlink has now progressed investigations and has identified a recommended transmission line corridor and substation site for feedback from landholders, traditional owners and community members. A Recommended Corridor and Substation Site Selection Report (RCSSSR) has been released which assesses the broad Study Area to identify potential transmission line corridors and substation sites and identifies a recommended option, based on a range of social, environmental, economic and technical factors. The RCSSSR is available for review and Powerlink will provide assistance to access the report and facilitate feedback. This feedback is essential to ensure we have fully considered all matters of importance to stakeholders related to the location of the proposed electricity transmission infrastructure.

Powerlink acknowledges the Traditional Owners and their custodianship of the lands and waters of Queensland and in particular, the lands on which we operate. We pay our respect to their Ancestors, Elders and knowledge holders and recognise their deep history and ongoing connection to Country.



Factors affecting transmission line corridor selection and substation site selection

When selecting a proposed route for a new transmission line or location for a substation, we consider a range of factors, including:

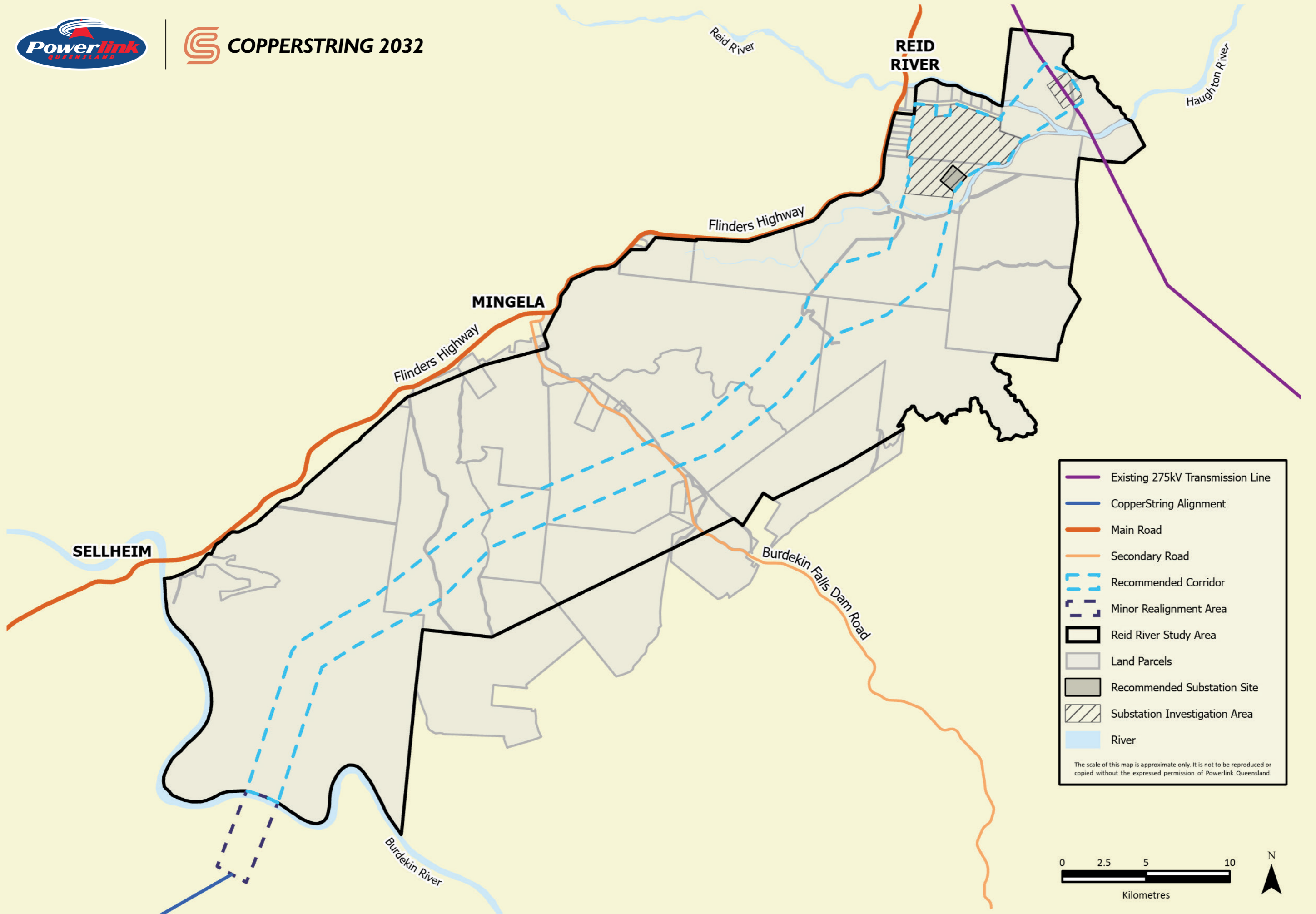
- social impacts, including land use and proximity to residential dwellings
- topography (features of the land, such as hills and creeks)
- agricultural land and activities.
- Aboriginal and non-Aboriginal Cultural Heritage
- environment and conservation areas
- constructability and access
- location of towns and high population areas
- location of existing infrastructure
- economic cost.

Additional factors we consider when selecting a site for substations include:

- proximity to existing network
- sufficient space for maximum development, including rebuilding
- surrounding area suitable for transmission line connections
- contaminated land
- flooding risk
- rocky and uneven terrain
- 24/7 substation access from nearest, formed road.



COPPERSTRING 2032





Recommended transmission line corridor and substation location

Identification of a recommended transmission line corridor and substation location involves assessing potential environmental, social, technical and economic impacts, using qualitative and quantitative information. The recommended corridor and substation site is the option that has the least overall impacts. Community feedback is now being sought to inform and refine this assessment process.

Two transmission line corridors were assessed. The Recommended Corridor is shown on the map overleaf. This generally 2km wide corridor has the following attributes:

- lower impact on essential habitat and minimal trigger areas for protected plants, while containing slightly more remnant vegetation with impacts that can be mitigated through strategic placement of the proposed line
- whilst containing slightly more Agricultural Land Class B, impacts on the additional area can be mitigated / avoided through strategic placement of the proposed line
- impacts less transport infrastructure and notably is further from the Macrossan Airfield
- contains no dwellings thereby enabling good physical separation to the proposed line
- lower costs and less complex construction measures due to a shorter length and less potential bend points (changes of direction).

Four substation site options were assessed. The Recommended Substation Site (generally 1km x 1.1km) is shown on the map overleaf. This substation site has the following attributes:

- land has been extensively cleared and is generally flat with a slight slope down to the north. All other sites contain areas of remnant vegetation
- good transmission line entry and exit opportunities
- site is closest to the Flinders Highway providing good access and requiring least access road upgrade
- closest dwelling is well removed from the site, being approximately 1.0 km from the site boundary with vegetation providing visual screening opportunities
- site is not affected by Q200 flood level.

Have your say on the recommended corridor and substation location

Input from landholders, the wider community and other stakeholders about this project is vital and will guide our decision making and planning. A full copy of the RCSSSR is available on our website at www.powerlink.com.au/projects/copperstring-2032. Please contact us if you would like to receive a hard copy of the report. We welcome your feedback and are seeking your input by Friday 4 October 2024.

To provide feedback on the recommended transmission line corridor or substation location:

- Visit the project website and use the interactive Social Pinpoint map to provide comments
- Call the project team on 0407 545 422, or
- Email projects@powerlink.com.au.

Feedback can also be provided at one of our community information drop-in sessions (details below).

- **Woodstock Community Hall, Glenn Road, Woodstock**
Thursday 12 September 2024, 2pm–7pm
- **Mingela Rural Fire Brigade Hall, 17 Towers Street, Mingela**
Saturday 14 September 2024, 9am–3pm

Next steps

Powerlink will review all feedback and submissions received and will use it to inform the release of a Final Corridor and Substation Site Selection Report later in 2024. This report will outline feedback from the community and how it has been considered. It will also share a final decision on the corridor for the proposed transmission line and location for the proposed substation.

Powerlink will then work with directly affected landholders, traditional owners and other stakeholders and undertake a range of environmental, heritage and constructability studies to determine a proposed easement alignment for the transmission line within the final corridor and, if necessary, make micro siting adjustments to determine the proposed final location for the substation site.

Development approval and land acquisition for the proposed transmission line and substation is planned to commence around mid-2025, with construction proposed to occur from late 2026.

Please note that no final decisions on the transmission line and substation location will be made until engagement has been undertaken and all required approvals have been achieved. We will continue to engage with landholders, the local community and other stakeholders as the project progresses.

To learn more about the Burdekin River to Reid River section of CopperString 2032 we encourage you to contact us.

Tom Lingard
Landholder Relations Advisor
0407 545 422
projects@powerlink.com.au
www.powerlink.com.au/projects/copperstring-2032



Use the QR code to access our project webpage.