

Theodore Wind Farm Connection Project

POWERLINK QUEENSLAND

About the project

The Theodore Wind Farm Connection Project is in the planning stage.

Powerlink has been engaged by RWE Renewables Australia (RWE) to progress work to connect their proposed Theodore Wind Farm to the electricity grid.

This work includes selecting and finalising the location of a new double circuit 275kV transmission line corridor and easement alignment, seeking required approvals, and building and maintaining the line if it is approved.

Our progression of corridor selection activities will build on previous technical work recently completed by RWE.

Project timeline

This timeline outlines the steps and expected timeframes to select and finalise the corridor, seek required approvals and build the new double circuit 275kV transmission line.

- 2023**
Corridor alternatives investigated by RWE including desktop ecology assessments and landholder engagement
- October 2024**
Draft Corridor Selection Report (CSR) released for feedback
- November 2024**
Local community information drop-in sessions
Feedback on Draft CSR closes
- Q1 2025**
Final CSR released
- Q1 2026**
Planning and approvals
- Q2 2026**
Construction estimated to commence

Powerlink acknowledges the Traditional Owners and their custodianship of the lands and waters of Queensland and in particular, the lands on which we operate. We pay our respect to their Ancestors, Elders and knowledge holders and recognise their deep history and ongoing connection to Country.



powerlink.com.au/theodore

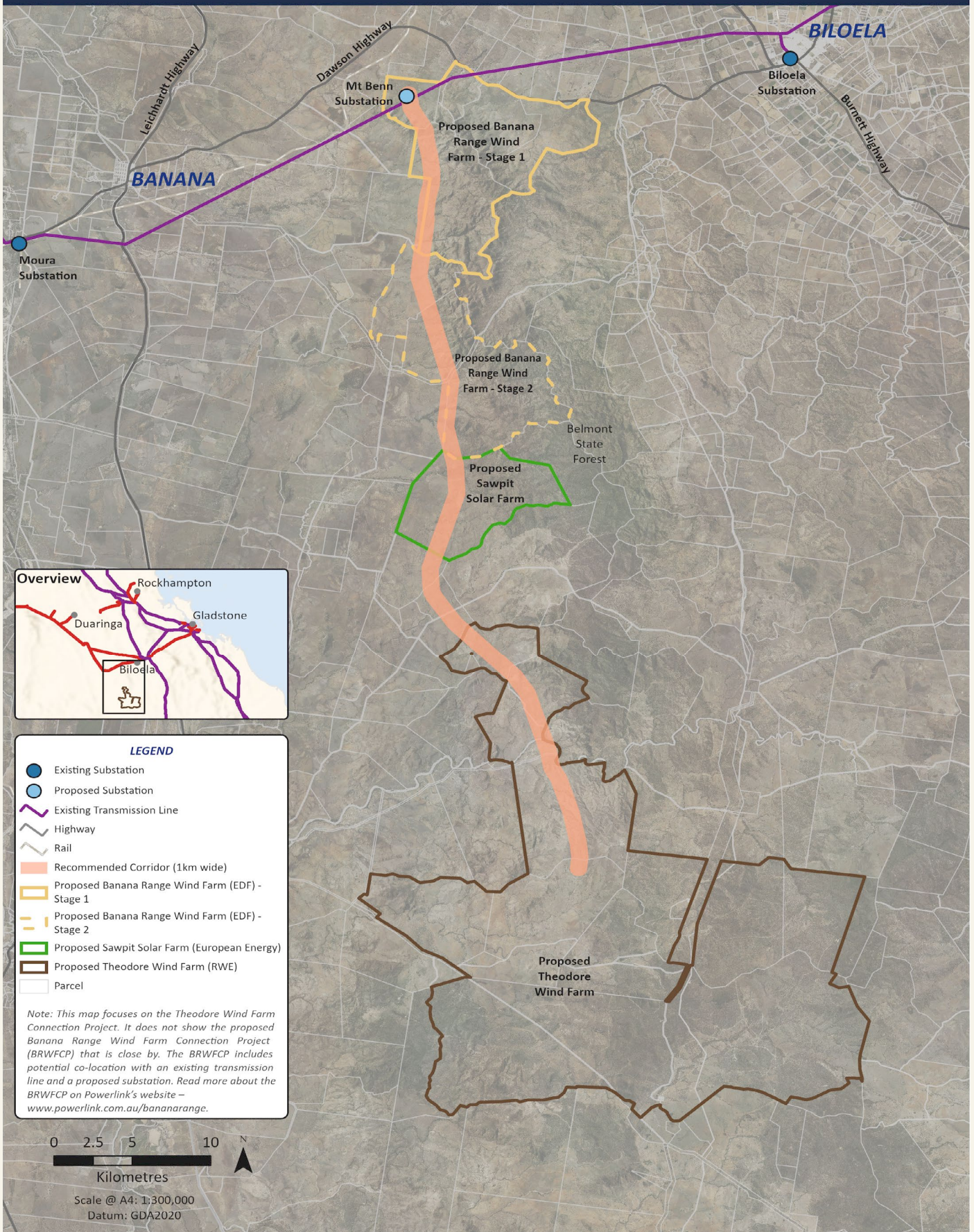


SAFE FOR LIFE
Everyone. Everywhere. Everyday.



SAFE FOR LIFE
Everyone. Everywhere. Everyday.

Theodore Wind Farm Connection Project



SAFE FOR LIFE
Everyone. Everywhere. Everyday.

Draft Corridor Selection Report - have your say

A Draft Corridor Selection Report (CSR) has been prepared that identifies a recommended corridor – building on RWE’s initial planning activities carried out.

We welcome feedback from landholders, Traditional Owner groups, the wider community and other stakeholders on the Draft CSR, with comments invited on this report by **5pm Friday 29 November 2024**.

Recommended corridor

The recommended corridor for this connection project is around 1km-wide and 55km long, and runs from the proposed Theodore Wind Farm site, which is located approximately 20km east of Theodore in Central Queensland, to the future Powerlink substation at Mt Benn near Banana. This corridor achieves a balanced impact across social, environmental and economic factors, as it:

- is the shortest, most direct route
- includes the least number of properties owned by the fewest landholders, which minimises property-specific impacts
- avoids significant impacts on agriculture, cropping and grazing lands
- is located a considerable distance from existing townships (mainly Banana) and major highways, reducing broad visual amenity impacts
- has potential to co-locate with existing distribution powerlines and other proposed renewable energy projects in the area, creating less impacts and maximising efficiencies.

Did RWE consider alternative corridors?

As part of their initial project planning activities, RWE investigated the following corridor alternatives:

- central corridor to the west of Mt Benn
- corridor to the west of Flat Top Mountain.

The decision has been made to not proceed with these alternative corridors due to a number of factors including:

- preference to maximise co-location opportunities with proposed infrastructure development
- potential corridor impacts on existing agricultural land uses (including mapped areas of strategic cropping land) and wetland areas
- number of waterway crossings
- overall corridor length
- number of additional properties impacted.

What approvals are required for the connection project?

The Theodore Wind Farm Connection Project is subject to separate planning approvals from RWE’s wind farm project. Following the finalisation of the corridor selection process, Powerlink will seek planning approval from the Queensland Government, under the Ministerial Infrastructure Designation (MID) process.

Powerlink may also need to seek environmental approval from the Australian Government under the *Environment Protection and Biodiversity Conservation Act 1999* (EPBC Act).

Powerlink will continue working closely with landholders, Traditional Owner groups, the wider community and other stakeholders as planning activities progress to ultimately reduce the 1km wide corridor to a 60m wide easement alignment.

powerlink.com.au/theodore



SAFE FOR LIFE
Everyone. Everywhere. Everyday.

Community information drop-in sessions

Powerlink team members will be available to talk with the community at three upcoming community information drop-in sessions.

Please stop by at anytime during these sessions to provide your feedback on the Draft CSR and ask any questions you may have about the project.

Location	Date	Time
Supper Room, Biloela Civic Centre 96 Rainbow Street, Biloela	14 November 2024	3.30pm – 6.30pm
Dawson Catchment Coordinating Association Theodore Community Room 60 The Boulevard, Theodore	15 November 2024	3.30pm – 6.30pm
Sutherland Hall 32 Bowen Street, Banana	16 November 2024	10am – 2pm

Support

Powerlink is offering support to landholders and community members through a professional counselling service (Rural Health Connect). This is an independent and confidential provider. To access this service, please call 0493 432 144 or visit ruralhealthconnect.com.au/employeeassistance-program. Select EAP from the services menu, select your psychologist and appointment time and complete the registration entering the EAP Program Code: 'Landholder Assist'.

About Powerlink Queensland

Powerlink is a Government Owned Corporation that owns, develops, operates and maintains the high voltage transmission network in Queensland.

We connect Queenslanders to a world class energy future, providing electricity to more than five million Queenslanders and 241,000 businesses.

We also connect large-scale renewable energy developments to the electricity grid, such as wind, solar and hydro, and provide electricity to large industrial customers across many sectors, including rail, mining and oil and gas.

Further information

If you have any questions about the Theodore Wind Farm Connection Project or would like to provide your feedback, please contact our project team on **07 3898 4919** or theodore@powerlink.com.au.



Scan the QR code or visit powerlink.com.au/theodore to view our project page, complete a feedback form or subscribe to keep up-to-date with project activities.

Please note, feedback on the Draft CSR closes at **5pm Friday 29 November 2024**.

You can also contact RWE directly for any enquiries about their wind farm project at au.rwe.com/projects/theodore-wind-farm.