

Bungaban Wind Farm Connection Project - Overview

DECEMBER 2024





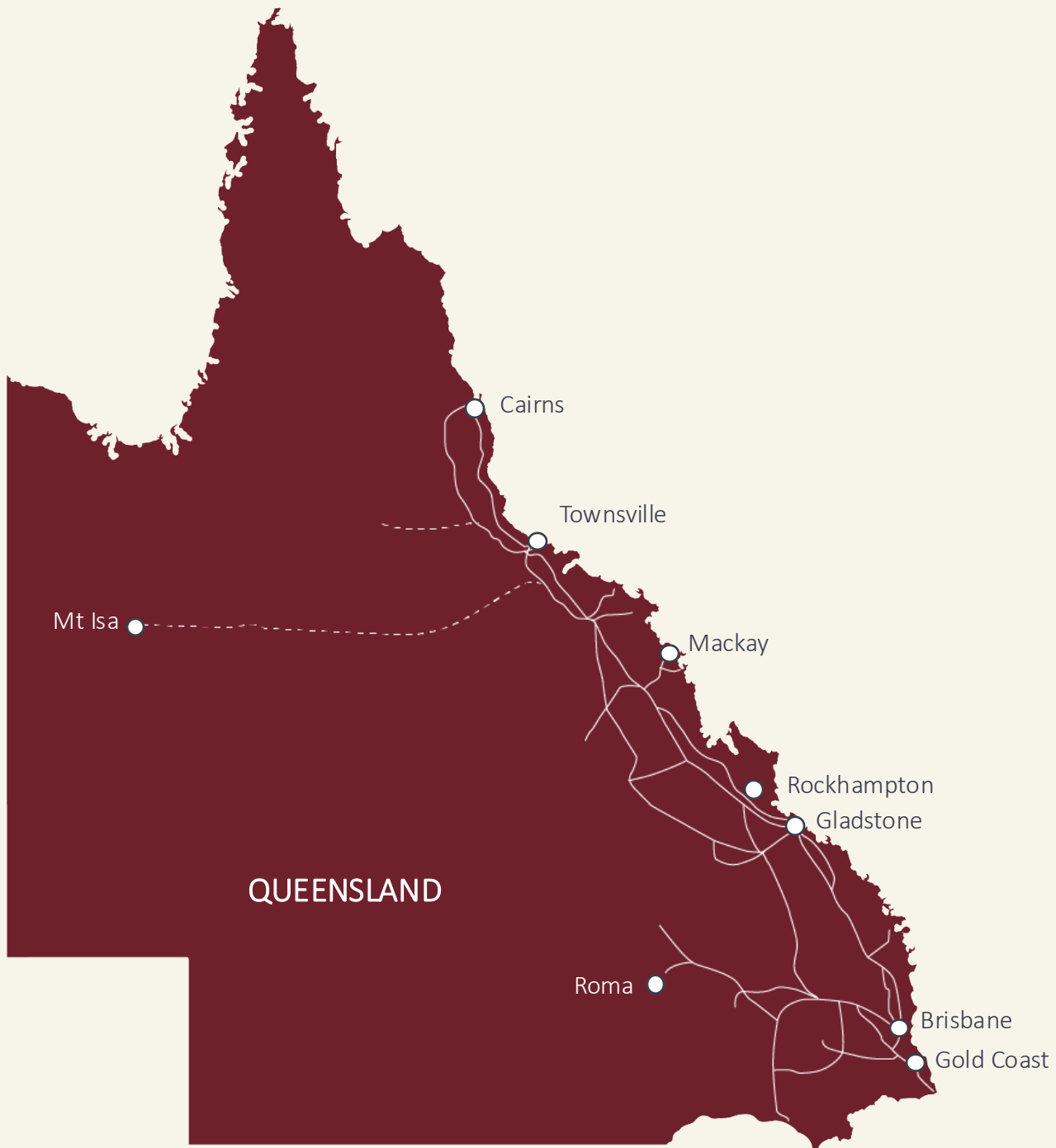
Acknowledgement

Powerlink acknowledges the Traditional Owners and their custodianship of the lands and waters of Queensland and in particular the lands on which we operate.

We pay our respect to their Ancestors, Elders and knowledge holders and recognise their deep history and ongoing connection to Country.

Agenda

1. Powerlink Queensland role in the power system
2. Project update
3. Transmission Easement Engagement Process
4. How we get to an easement alignment
5. Study area engagement
6. Key feedback themes
7. Corridor options overview
8. Engagement sessions
10. Next steps and timeline
11. Questions



Powerlink Queensland

Queensland Government owned – one of Australia's leading transmission network companies.

We own, develop, operate and maintain the **high voltage transmission** network.

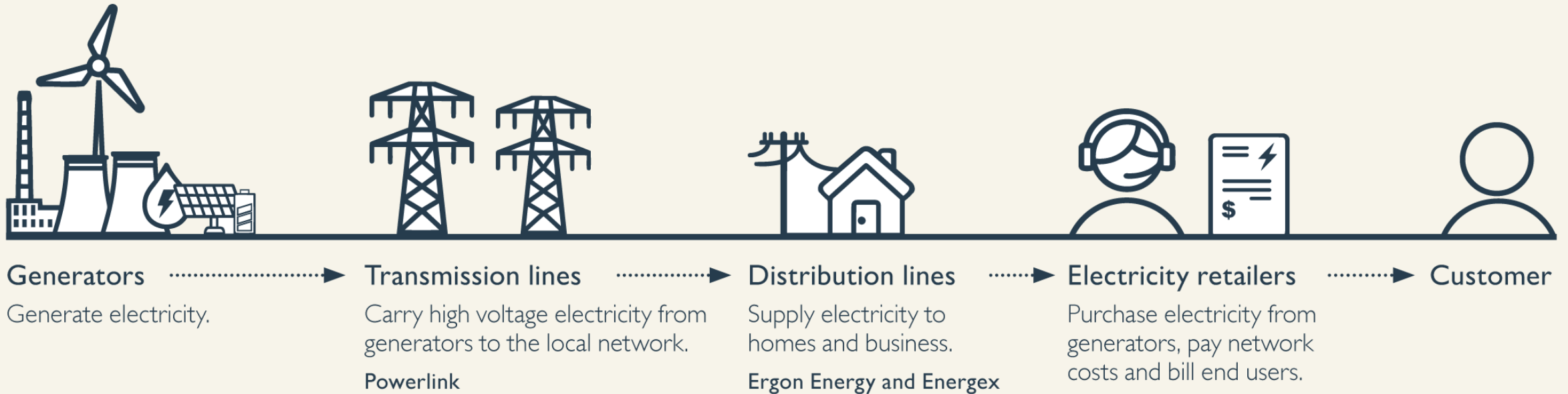
We provide electricity to more than **five million Queenslanders** and **241,000 businesses**.

Our network runs **1,700km** from north of Cairns to the New South Wales border.

Comprises **15,449** circuit kilometres of transmission lines and **152** substations.

The role of transmission

Electricity supply chain



Bungaban project update

- Powerlink has been engaged by Windlab to investigate a transmission line connection for its proposed Bungaban Wind Farm, 40km from Wandoan, to the electricity grid.
- The 1.4GW wind farm will have the capacity to generate enough energy to power 700,000 homes and enhance the security and reliability of the transmission network.
- The project includes one new substation and a new 275kV double circuit transmission line between Powerlink's existing Wandoan South Substation and the wind farm site.
- Powerlink released a high-level study area in July 2024 and sought feedback from Landholders, Traditional Owner groups, community members and other stakeholders between July and September 2024.
- Desktop analysis and community feedback has informed two corridor options we are now seeking feedback on.

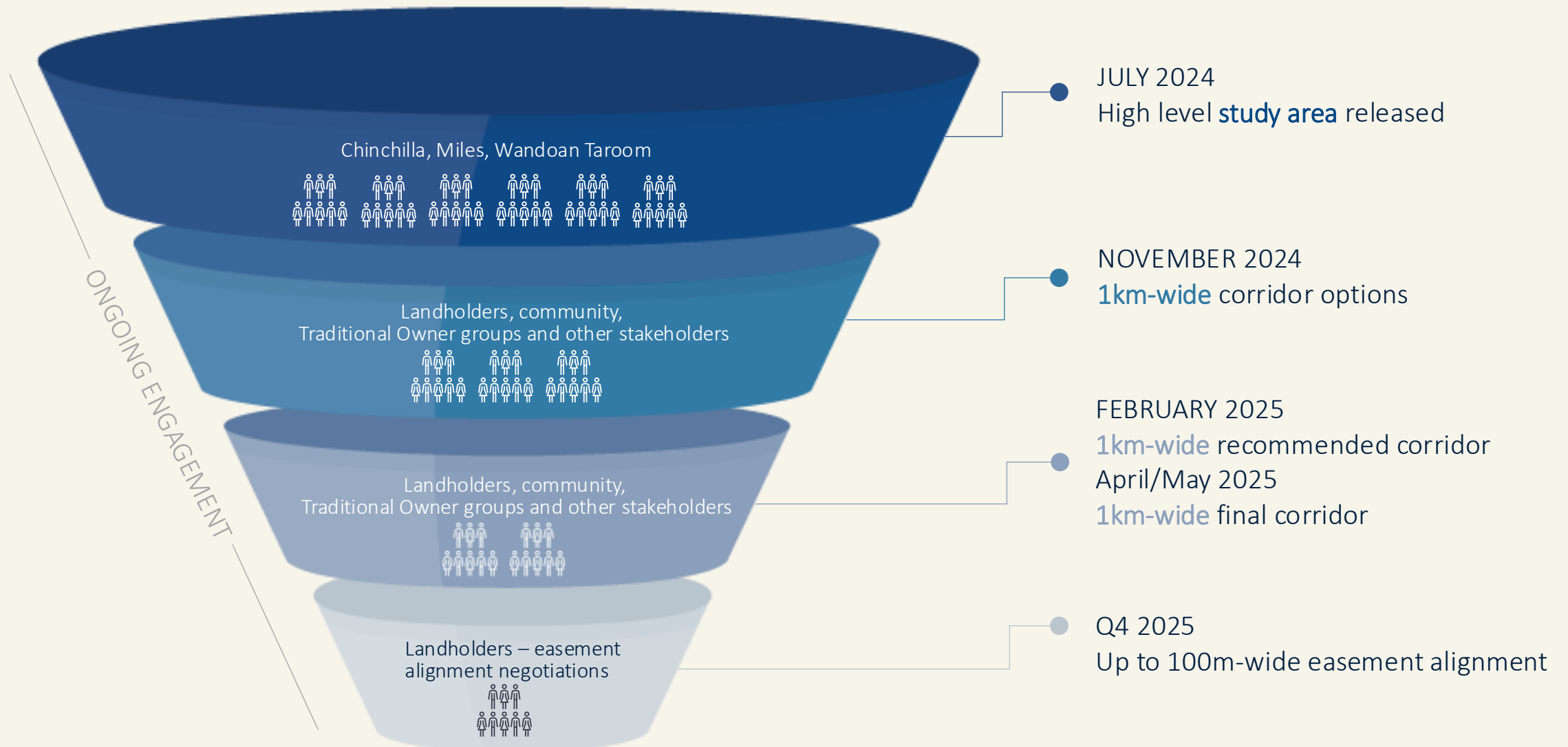




Transmission Easement Engagement Process



How engagement feeds into our process



Study Area engagement undertaken

Since July 2024, Powerlink has shared information and gathered feedback via:

- community information drop-in sessions (6) at Chinchilla, Miles, Wandoan and Taroom - 49 attendees
- interactive mapping - Social Pinpoint (30) individual comments
- landholder letters (56), telephone calls (26) and emails
- elected representative briefings
- consultation meetings with representatives of identified Traditional Owner groups
- distribution of 500 project newsletters and feedback cards
- podcast, print, radio and social media advertisements - promoting the project website and information sessions.

Key feedback themes



Land use

- Considerations of farming operations
- Type of activities which can occur within an easement



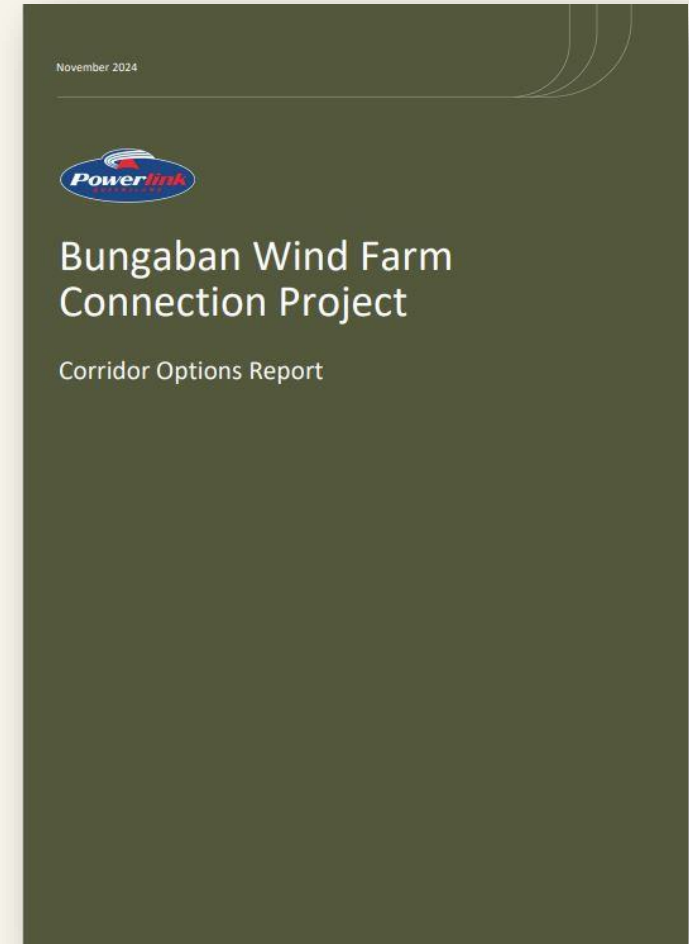
Property

- Distance from residential properties
- Landholder compensation

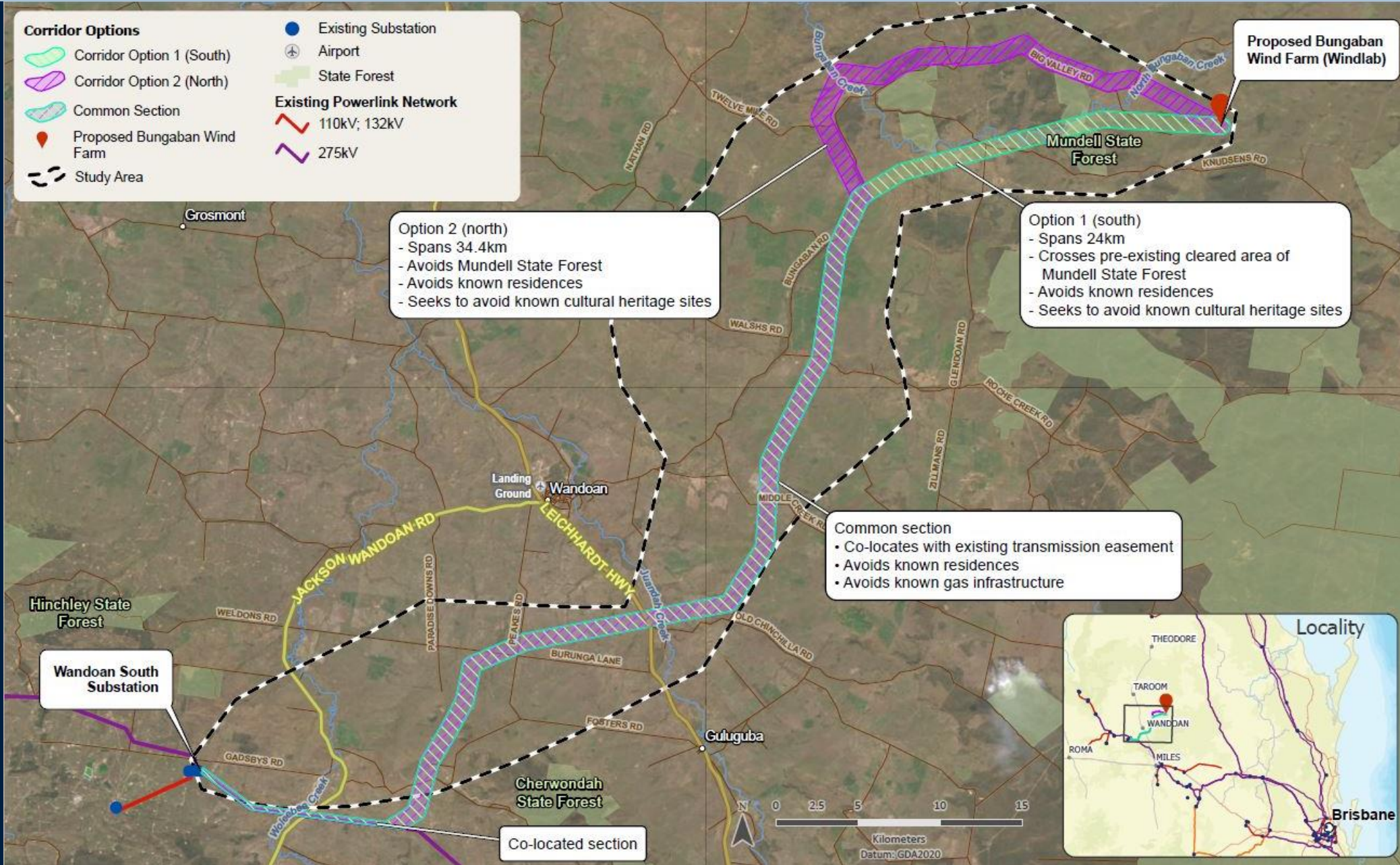


Environment and heritage

- Protecting native flora and fauna
- Environment impacts including biosecurity
- Compliance with environment legislation
- Avoidance of areas with cultural significance



Bungaban Wind Farm Connection Corridor Options – 1km-wide



Corridor option engagement sessions

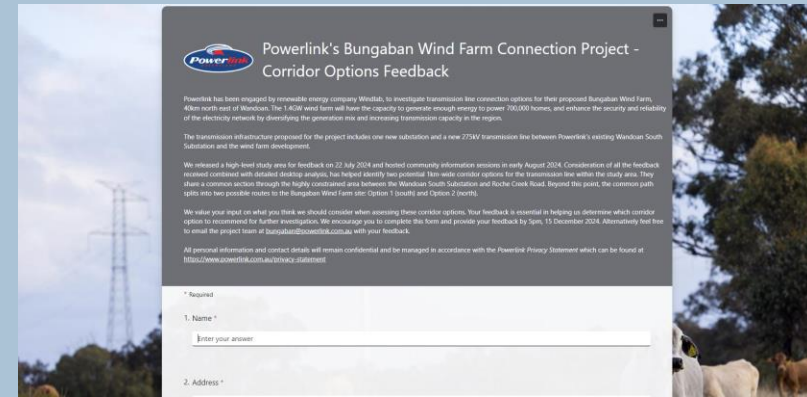
What we heard

- Impact of transmission lines on aerial mustering and farming practices
- Visual amenity concerns
- Proximity to landholder airstrip
- Development and progress of other renewable projects and potential need for more transmission lines
- Confusion over messages to landholders regarding Powerlink's role and proponent intentions
- Questions about the connection of the line to the Wandoan South substation
- Need for increased health services in the area
- Consideration for worker accommodation



Next steps

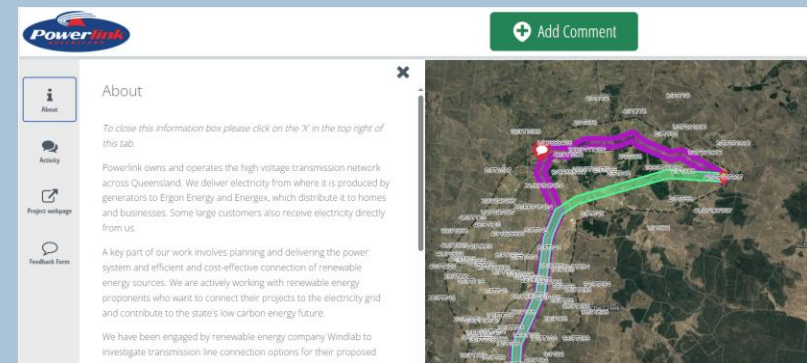
- We are seeking feedback via the feedback form on our project page.
- We are also keen for you to drop pins and comments on the interactive map with specific locations, buildings, operations, development plans that you think are important for us to consider.
- Feedback will be analysed and support the identification of a recommended corridor for further investigation.
- A Recommended Corridor Report will be released for feedback in February 2025.



INTERACTIVE MAP

You can also provide feedback on specific locations within the corridor options and other land use information via our interactive map which allows visitors to add a 'pin' at a specific location and make a comment. In this way we can engage with people from the local community and respond directly to specific questions and comments.

[VIEW THE INTERACTIVE MAP →](#)





We invite your feedback

Visit the project page

- Complete a feedback form
- Drop a pin and comment on our interactive map
- Feedback close Sunday 15 December 2025

Contact the project team

Email

bungaban@powerlink.com.au

Telephone

07 3898 4838

Web

powerlink.com.au/bungaban

Any questions?



Please enter
them in the chat



Thank you

We appreciate
your attendance

