

# Bungaban Wind Farm Connection Project

POWERLINK QUEENSLAND

## About the project

Powerlink is working with Windlab to connect the proposed Bungaban Wind Farm to the electricity grid.

The 1.4GW wind farm will generate enough energy to power 700,000 homes and is located 40km north-east of Wandoan.

Connection works include:

- building a new substation at the wind farm site
- constructing a double circuit 275kV transmission line between the wind farm and Powerlink's existing Wandoan South Substation.

## Recommended corridor

Powerlink released a high-level study area for the project in July 2024 and the feedback and insights gathered, combined with desktop analysis, helped to identify two 1km-wide corridor options which were released for public comment in November 2024.

Feedback then collected during November and December 2024 highlighted an area within corridor option 1 (south) for further investigation. Our consultation on this investigation area took place in March 2025.

Feedback received during this consultation period, and ongoing technical analysis, has resulted in three main realignments:

### Mundell State Forest realignment

Upon exiting the wind farm site, the corridor is realigned further south to follow property boundaries, and bypassing Mundell State Forest.

### Hansens Road realignment

The corridor has been realigned to the east to follow property boundaries more closely and avoid potential land use impacts such as aerial mustering.

### Middle/Roche Creek Roads deviation

A common section between Middle Creek Road and Roche Creek Road has been deviated moving further west to minimise impacts on planned land use activities and farming operations.

*Powerlink acknowledges the Traditional Owners and their custodianship of the lands and waters of Queensland and in particular, the lands on which we operate. We pay our respect to their Ancestors, Elders and knowledge holders and recognise their deep history and ongoing connection to Country.*



[powerlink.com.au/bungaban](https://powerlink.com.au/bungaban)



**SAFE FOR LIFE**  
Everyone. Everywhere. Everyday.



# Bungaban Wind Farm Connection Project – Recommended Corridor

The 1km-wide recommended corridor we have now identified offers the least overall impact on balance across social, environmental and economic factors. It:

- impacts fewer land parcels and properties, and directly avoids houses
- has potential to co-exist with future farming and development opportunities (such as renewable energy developments)
- seeks to follow property boundaries where practicable
- reduces impacts to remnant vegetation
- minimises impacts on agriculture, intensive land use and cropping lands.

## Middle/Roche Creek Roads deviation

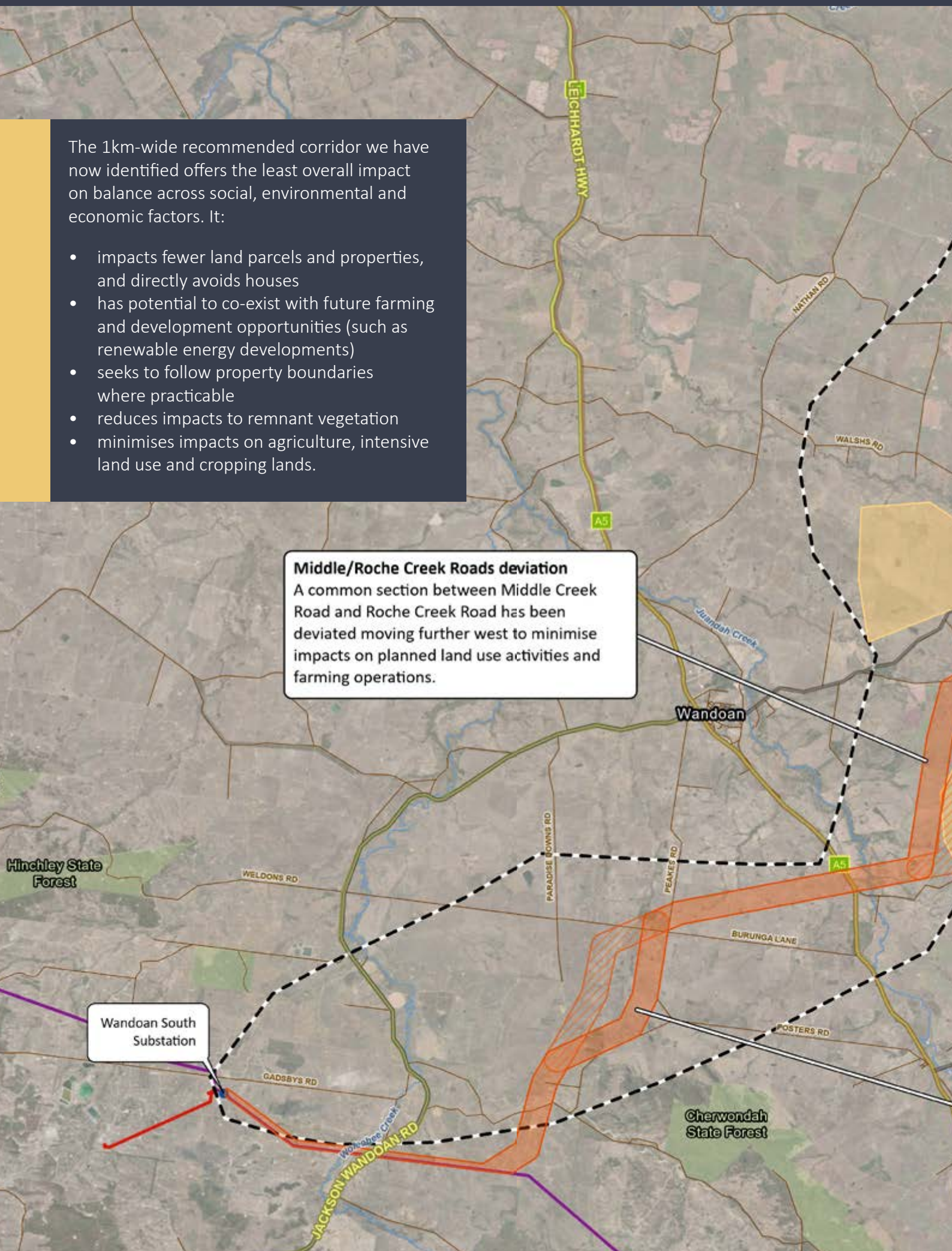
A common section between Middle Creek Road and Roche Creek Road has been deviated moving further west to minimise impacts on planned land use activities and farming operations.

Hinchley State Forest

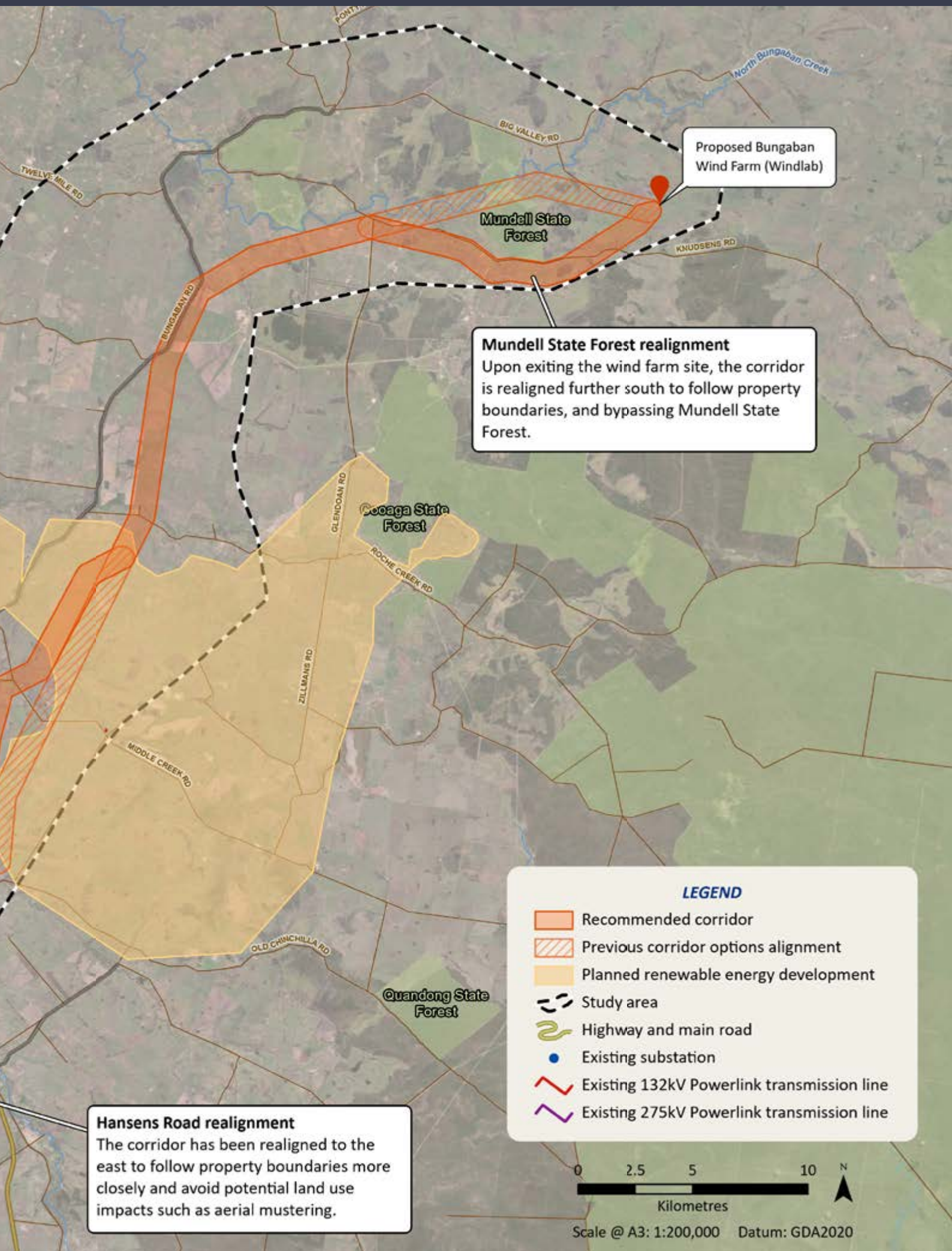
Wandoan South Substation

Wandoan

Cherwondah State Forest







## We welcome your feedback

We invite your feedback on the recommended corridor to help determine the final corridor for the transmission line. We are seeking your insights until **5pm Sunday 18 May 2025**.

You can provide feedback in multiple ways:

- speak to our Project Team in-person at an upcoming community information drop-in session in Wandoan (see details below)
- fill out the online feedback form at [powerlink.com.au/bungaban](https://powerlink.com.au/bungaban) (or scan the QR code)
- call us on 07 3898 4838 (Monday-Friday, 8am-5pm)
- email us at [bungaban@powerlink.com.au](mailto:bungaban@powerlink.com.au)
- write to us at Bungaban Project Team, Powerlink Queensland, PO Box 1193, Virginia QLD 4014.



## Community information drop-in sessions

Members of our Project Team will be available to speak with landholders and community members at the below locations and times.

- **Tuesday 6 May 2025, 2pm-3:30pm**  
Wandoan Park (next to café)
- **Tuesday 6 May 2025, 4pm-7pm**  
Wandoan Cultural and Community Centre
- **Wednesday 7 May 2025, 7am-10am**  
Wandoan Cultural and Community Centre
- **Wednesday 7 May 2025, 10:30am-12pm**  
Wandoan Park (next to the café)

## What's next?

Powerlink will consider all feedback received on the recommended corridor before releasing the final corridor for the transmission line. The final corridor is due to be released in June 2025.

Following the final corridor release, Powerlink will continue engaging with impacted landholders to conduct on-site land studies and commence easement negotiations.

## Powerlink in the community

Thank you to everyone who visited our Powerlink team at the Wandoan Show on Saturday 5 April. The event was blessed with beautiful weather and it was great to see the local community and nearby areas come out in such large numbers.

Powerlink team members were pleased to help set-up the event on Friday, and to also co-fund a Starlink service to improve internet connectivity for the show and future events at the showgrounds.



*The Powerlink team at the Wandoan Show*

## About Powerlink Queensland

Powerlink is a Government Owned Corporation that owns, develops, operates and maintains the transmission network in Queensland.

We connect Queenslanders to a world-class energy future, providing electricity to more than five million Queenslanders and 241,000 businesses.

We are also responsible for connecting large-scale renewable energy developments, including wind and solar, and providing electricity to large industrial customers in the rail, mining and LNG sectors.